



# Thanet Youth Strategy Rolling plan 2008-2011

## Thanet's Youth Strategy: 2008-2011

### **1. Why a Youth Strategy: Thanet's Youth**

Young people, aged 10-19 make up approximately 13% of Thanet's population<sup>1</sup>. Males outnumber females by around 1,400 and on average there are 1,327 children in each electoral ward. Dane Valley has the largest (0-18) child population (nearly 2,500); Birchington North has the smallest (538). They therefore form a significant part of the local community and have a great impact on community life. Their experiences shape their personal characteristics, attitudes and aspirations which determine their responses to choices, opportunities and challenges. Strong social and emotional skills reduce the likelihood of young people (YP) experiencing poor outcomes and becoming involved in crime, and increase success in the labour market. As such it is vital that their personal and social development is supported effectively and this can only be achieved via a clear understanding of needs and aspirations.

Thanet is ranked as the 62nd most deprived authority out of 354 authorities nationally (1 being the lowest)<sup>2</sup>. In relation to Kent County Council rank of average out of 12 local authorities Thanet was the most deprived local authority area (2000-2004). This is important as evidence shows that disproportionately it is young people from poorer backgrounds and communities who lack the circumstances supportive of developing strong social and emotional skills, and so are at greater risk of poor outcomes<sup>3</sup>. Accordingly, whilst this is a youth strategy for all young people aged 11-19, particular care will be paid to ensuring sufficient support is available for those for whom, reaching their potential will be hardest to achieve. In Thanet this would include in particular, children with disabilities<sup>4</sup>, looked after children<sup>5</sup> and young people located in the wards with high concentrations of deprivation and density<sup>6</sup>.

---

<sup>1</sup> According to the 2001 Census – actual figures are 16365 making 12.9%

<sup>2</sup> English Indices of Deprivation 2007. December 2007 DCLG

<sup>3</sup> Aiming High for Young People: a ten year strategy for positive activities. Dept. for Education and Skills. May 2007. 7.

<sup>4</sup> According to Census 2001 data, Thanet, Dover, Shepway and Canterbury contain a proportion of households above England average figures who class themselves as containing a member with long-term limiting illness. 1.7 people in every 10 have a limiting long-term illness. The Department of Work and Pensions figures indicated at August 2006 there were 47,115 people with physical / sensory disabilities, Learning Disabilities or Mental Health problems in Kent claiming Incapacity Benefit and Severe Disability Allowance. Another 53,720 were claiming Disability Living Allowance. Highest numbers of claims were recorded in Thanet, Swale and Shepway. Poor health is an attribute associated with deprivation and the figures for these areas are commensurate with the areas' rank in deprivation indices. Future need is indicated by the fact that of those claiming Disability Living Allowance, 8,135 people were under 16. The highest numbers of such claims were recorded in Swale, Thanet and Canterbury. (Report Updated Needs Analysis: Kent Supporting Team May 2007. 35-36.)

<sup>5</sup> The Report of the Kent Child Protection Committee Inquiry into the general concerns expressed by officers and politicians in the Thanet Area regarding Child and Public Protection Issues June 2005 (hereafter the 'Thanet Inquiry') showed that Thanet, the most deprived district in Kent, has proportionally 7 times the number of Looked After Children as the most affluent areas of Kent. Further the overwhelming proportion of Looked After Children in Thanet are placed by Other Local Authorities. 36-45.

<sup>6</sup> Data for Thanet indicates concentrations in terms of deprivation and density: Central Harbour; Cliftonville West; Dane Valley; EastCliff; Garlinge; Margate Central; Nethercourt; Newington; Northwood; Sir Moses Montefiore; Westgate on Sea. (Thanet Play Strategy . 58)

Engagement with young people and families from transient or BME communities will also be a focus of attention<sup>7</sup>.

## **2. Vision and overarching themes**

We want young people to reach their potential by staying healthy, safe, active and engaged in their local communities. Thanet's young people have expressed their desire to have much greater involvement in the design and delivery of the services provided for them and the community decisions that impact on them. We want to ensure that they are able to do this.

This strategy will form the 11-19 aspect of the Thanet Children and Young People's Plans giving youth service providers and the developing local Children's Trust partnerships with direction and a plan of actions to support the achievement of better outcomes for young people. It is important to note that this is the start of the journey and progress will be reviewed annually to ensure that targets are being met and new need is identified as appropriate. The strategy has been organised along the lines of the Every Child Matters Framework and through its implementation we will ensure that outcomes are improved across the five themes:

- Being Healthy
- Staying Safe
- Enjoying and Achieving
- Making a Positive Contribution
- Achieving Economic Well Being

## **3. Policy Background and the Local Context**

### **Policy Background**

The Strategy works to the themes of the Every Child Matters framework which sets out the five outcomes important for children and young people's development. It also responds to the duty on local authorities introduced by the Children Act 2004 to ensure the safeguarding of children and co-operation to improve services, the challenges and principals set out in the Youth Matters green paper and the Government's Aiming High 10 Year Strategy for Youth.

---

<sup>7</sup> Engagement with families and young people from minority and transient communities has been raised as a concern within the development of the strategy.

## The Local Context

There has been a long-standing identified need to develop a multi-agency/partner youth strategy that addresses the key issues for young people in Thanet and supports the objectives within the Kent Children and Young People's Plan<sup>8</sup>. The aim of this strategy therefore has been to identify and address the wider needs of Young People and respond to local people's concerns about provision for them. Thanet District Council (TDC) has led on the development of this strategy as part of its Corporate Plan priorities and responsibilities under the Kent Area Agreement<sup>9</sup>. This strategy is equally well placed to support the delivery of outcomes proposed for the Kent Agreement 2 and Public Service Agreement targets, for example:

- PSA 12: Improve the health and well-being of children and young people;
- PSA 14: Increase the number of children and young people on the path to success
- PSA 15: Address the disadvantage that individuals experience because of their gender, race, disability, age, sexual orientation, religion or belief.
- PSA 21: Build more cohesive, empowered and active communities

(Where appropriate, national indicators as published by Department of Communities and Local Government have been mapped into the action plan to show where supporting links exist<sup>10</sup>).

There are, of course, many other relevant strategies being implemented in the district that this strategy links to, supports or influences. These include but are not limited to the Thanet Play Strategy (Appendix D), which focuses on the provision of designated play areas, play provision and open spaces for use by children and young people within the 0-18 age group; the developing Sports and Active Recreation Strategy, Thanet Teen Pregnancy Strategy, Kent Commissioning Strategy for Mental Health and TDC's Housing and Homelessness Strategy.

---

<sup>8</sup>The Kent Children and Young People's Plan is a single, overarching Plan for all services affecting children and young people in the county. The county council is responsible for co-ordinating the Plan with input from a range of other services including health services, schools, social services for children and young people, youth justice organisations and the voluntary and community sectors. Further details on the plan can be found on the KCC Website [www.kent.gov.uk](http://www.kent.gov.uk)

<sup>9</sup>TDC Corporate Plan Priority: Theme 5: *2 Understanding the needs and priorities of our community by consulting and delivering a youth strategy*. The Kent Area Agreement which is an agreement between the Kent Partnership (KCC and the 12 District, Borough and County Councils) and the Government to improve outcomes in Kent. Of particular relevance to this strategy is Outcome 7 which aims to *'improve the participation and engagement by all children and young people in youth, cultural and community activities'*.

<sup>10</sup>Caution is raised that the guidance for these indicators has yet to be finalised and so relevance should only be viewed as indicative DCLG: The New Performance Framework for Local Authorities & Local Authority Partnerships: Single Set of National Indicators. October 2007

#### 4. The Development of the Strategy

This strategy has been developed by a sub-group of the Thanet Children's Consortia. Led by TDC in partnership with Kent County Council Youth Services (KYS), a wide range of voluntary and statutory agencies (a full list is available at Appendix B) participated in both the steering group and associated sub-groups that were formed to consider each of the five themes. The objectives and action plan contained in this strategy are a result of this work and extensive consultation with children and young people, their families, parents, carers and the people that work with them. This process has been exceptionally positive with a more developed inter-agency approach resulting as a key outcome that we will work hard to ensure continues.

A summary of the consultation process is attached at Appendix C. The findings of the consultation are detailed throughout the action plan as they relate to each theme. The results of the consultation generally reflected the issues established in the preliminary research for the strategy and the information received was used by the steering group to gain a better understanding of the issues that had been raised in general terms. The responses to the consultation showed that young people in Thanet have a very clear idea of not only the issues that impact upon them, but also the wider community and what could be done to redress them. Some of their priorities mirrored general concerns raised by adults for example street cleanliness, showing that young people are equally concerned and affected by their community's environment.

#### 5. Objectives

Through the implementation of this strategy we will improve outcomes for young people in Thanet by improving their ability to fulfil their potential by being healthy, active, safe and engaged in community life. Under each of the themes of the strategy, the issues identified as important to young people are detailed, together with related data. This is followed by an action plan that shows how we will move towards addressing the identified issues; who will be responsible for that action; and the timeframe for that activity.

#### 6. Underlying principles

Common issues that cut across the themes have emerged strongly in the development this strategy and every effort has been made to accommodate them in the action planned:

**Accessing Facilities, Information, Advice and Support:** Young people need to know what facilities, support and advice are available to them. Lack of information on what is available was identified as a particular problem rather than lack of provision. Improving access to information will therefore be a key aim of this strategy. This notwithstanding, agencies must address existing needs and provide the facilities wanted. This strategy will ensure that agencies work together to join up provision and bridge identified gaps. To help us move forward with this work we are establishing a **Youth Communicators Network** led by TDC which will be responsible for coordinating the flow of information to and from partners and ensuring that young people are aware of all the activity associated with this strategy.

**Families and Community:** Young people identified a need for more support for families and more positive engagement with local communities. Whilst these needs will be supported throughout the action in this strategy, a particular action in the plan is

piloting the development of a central community venue that will provide intergenerational support services, activities and facilities targeted at needs identified.

**Safety and Inclusion:** Young people have concerns about their safety; especially after dark. In the action planned and in liaison with the Thanet Community Safety Partnership (CDRP) we will work to address them. Equally there are areas where young people need to be more informed of the risks posed to their safety by things often taken for granted such as internet use and we will be working hard to raise awareness of these. We will work to ensure that all young people benefit from the action planned and are able to access the opportunities on offer regardless of race, disability, gender, sexual orientation, age and religion or belief. Barriers faced by particular groups of young people, such as looked after children, children from BME groups and those outside of mainstream education have been identified and initiatives have developed to overcome them.

**Celebrating Achievement and Reaching Potential:** Young people understand that academic achievement is important but feel that personal achievements outside of education should also be recognised. Underpinning this strategy is the commitment to ensuring young people are supported in reaching their potential and that their achievements are celebrated.

**Having a Voice and Being Heard:** Young people want to have more of a say in how things are run and to feel like they are being listened to and taken seriously. We will develop effective communication and consultation channels that maximise inclusion and promote engagement to ensure all children have the opportunity to be involved in the issues that affect their lives.

**Strategic partnering and inter-agency approach:** Improved outcomes for young people can only be achieved by effective public, private and voluntary sector partnerships. The improved inter-agency approach that has resulted through the development of this strategy must be expanded and continued and partners involved have committed to continue working together to ensure that it remains a 'live' document that continues to identify and respond to local need.

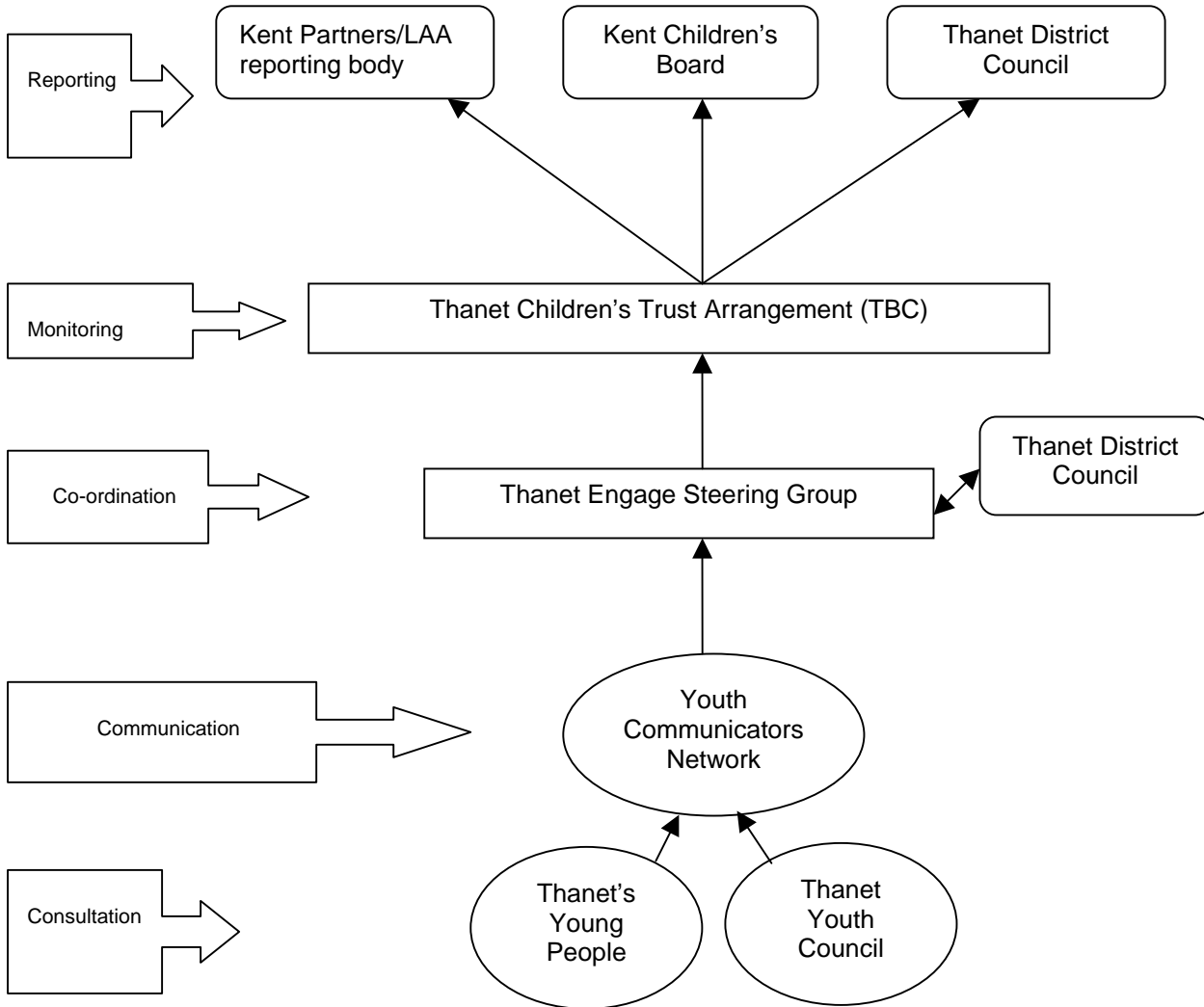
We have also recognised that whilst action planned in this strategy is supportive, effective remedy of some of the issues identified in the development of this strategy require a response from a more strategic level. Thanet Engage Steering Group as the delivery body for the Youth Strategy and a sub-group of the Children's Consortia will ensure that they are accommodated in the developing Children and Young People's Plans for both Thanet local partnerships. In particular these issues concern:

- The formalisation of links between schools and agencies working with young people and young people's desire for greater agency presence in schools
- Activity to support young people with complex needs
- Support for looked after children (LAC) and those with special needs or Not in Employment, Education or Training (NEET)

On an on-going basis the Steering Group will ensure that information as to the need, wishes and aspirations of children in Thanet is accurately and frequently reported to the Consortia until the Thanet Children's Trust Arrangements have been developed.

## 7. Evaluating delivery of the Youth Strategy

The delivery of the Thanet Youth Strategy will be coordinated by the Thanet Engage Steering Group; activity will be monitored and managed in the following way:



The strategy will be annually reviewed to ensure that targets and actions remain appropriate. The first review will be completed by March 2009.

If you would like more information about the Thanet Youth Strategy, please contact:  
(TBA)

## **8 – The Action Plan: Being Healthy**

### **Issues identified by young people:**

- Most young people have awareness of ways to be healthy but identified problems with weight/food - obesity and anorexia
- Most young people have basic awareness of sex education but feel there are still too many young mums in Thanet and that family planning facilities are not open at convenient times
- Too many young people smoke, but difficult to change the cool image and break the habit
- Underage drinking, especially in groups on the streets can be intimidating
- More needs to be done to encourage young people to participate in sports, not just the 'fit' people

### **Issues identified by parent/adult/professional:**

- Adults' main concerns regarding health for young people focussed around drugs, alcohol, sexual health and teen pregnancies
- Professional concerns around addiction, obesity, sexual health (STI's) and mental health

### **Issues Identified by the Being Healthy Sub-group**

- Key areas to address: sexual health, mental health, obesity and the wider social issues that lead to the linked problems.
- Sustainability of funding for support services
- Addiction – drugs, alcohol and gambling:
  - Knowledge of the extent of problem with young people – potentially related to language use (druggie and tramp have been used interchangeably in reference to drug users in the consultation)
  - Increase in awareness of the support available
- Sexual health
  - The need to raise awareness regarding sexual health support available and join up this work with other service providers to support this
  - Time and type of support available – review accessibility for young people
  - Raising self esteem so that young people are less likely to engage in risky behaviour
- Mental health
  - Raise awareness regarding young people emotional/psychological issues (especially) with parents, professionals and vulnerable young people.
  - Make linkages with domestic violence
- Obesity
  - Support for young people to help them maintain healthy lifestyles

- Promote a more open understanding of activity so that it is not just viewed as mainstream sport and is therefore more inclusive. The cost of sports activities can sometimes be a barrier

## Data

- Under 18 conception numbers and rates in 2005 were the highest in the county, however between 2000-2004 there was a reduction in both numbers and rates. Teenage conception and pregnancy is a highly complex area and programmes are most likely to be effective if they are multi-faceted and address individual, social and economic factors.
- The East Kent Sexual Health Needs Assessment March 2007 highlights recognised association between teenage pregnancy and deprivation. In terms of deprivation, Thanet is ranked amongst the 30% most deprived area in England. Other factors prevalent in Thanet also elevate the incident of risk – looked after children for example, are a particularly vulnerable group.
- Similar to other areas in England, the incidence of STIs in the South East is rising, particularly among those aged 16-24. This suggests that ‘additional and concerted efforts’ targeted at young teenagers is required. In general, access to GUM clinics in Thanet is very limited. (The East Kent Sexual Health Needs Assessment March 2007. 10-16.)
- There are no reliable overall obesity data for Thanet and comparisons have to be extrapolated from national and regional rates. The Household Survey for England estimates 33.1% of boys aged 2-15 are either overweight or obese and that 35.1% of girls are in these categories. If these rates are applied to Thanet then it would appear that there are around 3,400 overweight children aged 2 – 15 in Thanet, with 4,200 others in this age band being obese.
- The KCC study May 2006 ‘What do children and young people think’. Approximately three quarters of 11-19 year olds said they needed more information on healthy living, safe sex, how to cope with feeling depressed and sex education
- PESSCL (School Sport) 2006/07: Thanet School Sports Partnership recorded the following figures for 2006/07
  - 65% of pupils receive at least 2 hours PE per week
  - 81% of pupils achieved at least 2 hours PE and school sports per week.
- Whilst local data is not available, the most recent national statistics obtained from the ‘Taking Part’ Central Government Survey of 11-15 year olds carried out 2006/07 indicated that 93% of 11-15 year olds participated in sport in the last 4 weeks. 89% included sport outside of school. This figure drops to 79% and 68% for 16 and 19 year olds respectively. This equates to almost a fifth of the population being lost to sport in the four years between 15-19 years old.
- The results of the ‘Active People’ (Sport England survey) 2006/07, recognised as the most comprehensive participation data available for young people aged 16+ show:
  - Overall 17.7% of the adult population in Thanet participates in sport regularly (3 x 30 minutes per week) compared to an average of 19.9% for Kent and 21% for England.
  - 33% of the 16-24 year old category is regularly active. This figure then decreases consistently with age.
- Child Poverty as measured by parental income increases the risk of mental health problems in children and young people with 15% of children at the lowest incomes levels experiencing mental health difficulties compared to 5% of children and

young people at higher end of income level. (Child and Adolescent Mental Health (CAMHS) Commissioning Strategy March 2007. 8.). According to the 2006 annual survey of hours and earnings, average income levels in Thanet are the lowest in Kent and at £16,349 significantly below the South East average £20,524. SE National Housing Federation.

- Adverse events such as domestic abuse, sexual abuse, acrimonious divorce and separation or growing up in households with where parents misuse alcohol or drugs and/or have mental illness, are all risk significant factors to mental health problems. There are particular vulnerable groups of children most at risk of mental health disorder which include; children involved in the criminal justice system, LAC, children with learning disabilities, children of parents with mental illness and/or substance misuse problems. Initial indicators are that these groups of vulnerable children and young people have the highest level of need yet currently engage least with specialist mental health services and require joint, multi–agency approaches and services if they are to benefit from specialist mental health intervention. (CAMHS Commissioning Strategy March 2007. 8-9)
- There is a relationship between poor mental health, low self esteem and risk taking behaviour which impacting upon physical health, examples include, smoking, bullying, substance misuse, risky sexual behaviour and teenage pregnancy, risk taking activity and injury. (CAMHS Commissioning Strategy March 2007. 26.)
- Thanet has the highest amount of referrals of young people into Tier 3 Drug and Alcohol Services across Kent receiving over 25% of the East Kent referrals into tiers 3/4 Kent Council on Addiction (KCA) Drug and Alcohol service in 2006-2007. Tier 3 services /Specialist treatment is available for young people aged 10-17 misusing or affected by someone else's substance misuse. (Source: KCA)
- Across Kent, Thanet is the area detailing the greatest density of reported domestic violence. In looking specifically at Thanet as a whole, the two areas reporting the highest levels of domestic violence are Margate Central and Cliftonville West respectively. The “Thanet Inquiry”. 48.
- Compared to the general population, young people in care (looked after children) are: 4 times more likely to be drug users, 4 times more likely to have mental health problems, 4 times more likely to be pregnant or to already have a child when they leave care. The “Thanet Inquiry / Placements into Thanet Report.

#### **Current Provision:**

- The National Healthy Schools Programme aims to support young people to develop healthy behaviours, raise pupil achievement, reduce health inequalities and promote social inclusion. The programme addresses PSHE, healthy eating, physical activity and emotional health and well being. Both School Clusters in Thanet are already exceeding national targets – Thanet Cluster 1 is the first in Kent to have 100% of schools to achieve the ‘Healthy School’ status. Cluster 2 has 86% of schools that have achieved the status.
- The Thanet Sports Network (TSN) co-ordinates and develops community sports activity to deliver better outcomes locally.

- Lets Get Started – Community Healthy Lifestyle Events. EKC PCT Health Promotion/Public Health and KCC Libraries in partnership with a range of local organisations work together to deliver a range of lifestyle events aimed at encouraging long-term healthier lifestyles.
- The Thanet Coast Project offers walks and bike riding activities for all age groups and abilities.
- The Child and Adolescent Mental Health Service (CAMHS) – Local Implementation Group is responsible for developing services to meet local need.

#### **Actions identified by young people:**

- Healthy eating, more participation in sports and not smoking should be encouraged more outside of school. But it shouldn't be enforced as will make people want to do it more
- Health professionals should be available at schools so young people can access advice
- Enforce 'no-drinking in public' rules. Police/wardens should pour drink away and move groups on as they [the groups] will eventually get fed up and move indoors. All shops should have blanket policies requiring ID for buying alcohol
- Learn more about sexual health and teen pregnancy so that young people are more aware at an earlier age
- Young people should help shape the way sex education is addressed in schools. Professionals should deliver it but young people need to be involved in the process to get more out of it
- Make getting hold of contraceptives easier, in schools for example as it's embarrassing to go to other places

#### **Actions identified by the sub-group**

- Many of the actions and issue areas identified by young people are in place and this information should be collated; the next step will be to work with young people to identify why they are not being accessed. Joining up the delivery of support services and involving young people in the design and delivery of the services for them would be progressive.
- Improve levels of awareness and understanding (with both young people and Professionals) regarding the supportive services that are available for young people (related to drugs/alcohol/sexual health/positive lifestyles); how to access them; the different roles they have and how they fit together (to support inter-agency signposting). In particular improve engagement with young people (and their families) that are not in mainstream education, have additional needs (e.g. disabilities), are particularly vulnerable (e.g. looked after children) or are located in rural areas. Carried out effectively this could help to address the issues identified.
- Support young people to engage in positive behaviour and make healthy lifestyle choices.
- Ensure the Children's Trust arrangements is aware of the issues raised regarding provision of services provided for children that may have complex needs to ensure they receive appropriate services

- Investigate the potential to facilitate low level training for those working with YP to facilitate awareness raising activity

### Being Healthy

What do we want to achieve	How: Action that will be taken	Why do we want to do it	By Who: Lead responsibility	Resources: Premises Budget / Staff Equipment	Key indicator? How will we measure progress	By When:
<p>Increase awareness and understanding (with both YP and Professionals) regarding the supportive services available for YP; how to access them; the different roles they have and how they fit together.</p>	<p>Design and deliver with YP awareness raising / training initiatives and material to cover issues related to:  <b>Healthy Eating</b>  <b>Alcohol</b>  <b>Drugs</b>  <b>Smoking</b>  <b>Cessation</b>  <b>Sexual health</b></p>	<p>YP have identified specific areas where they would like additional support e.g. diet/sexual health/drug and alcohol misuse. These activities will responds to this and support YP to develop positive relationships, raise self-esteem and increase resilience to media &amp; peer pressures.</p>	<p>TDC Heath Strategy Lead</p>	<p>EKC PCT Health Promotion/Public Health (e.g. Stop Smoking)  TDC Cultural Services Pipeline  Connexions  KCHT  KCC Schools Drugs Education Advisor  EK Healthy Schools  TDC Comms  Within current budget</p>	<p>Awareness levels measured against 'Information and Advice' baselines established in 2007 Survey</p>	<p>April 2009 and bi-annually</p>
<p>Empower YP to make healthy and positive lifestyles choices before 'risk' situations arise and ensure the support is accessible to all.</p> <p>NI 112: Under 18 Conception rates  NI 113: Prevalence</p>	<p>Delivery of the 'Intoxic8' prevention programme as 6 whole day workshop events in secondary schools.  Extend delivery to one venue outside of mainstream education</p>		<p>Pipeline</p>	<p>Options  Fegans  KCC Schools Drugs Education Advisor  Connexions</p>	<p>Annual survey and feedback forms completed at the sessions to identify if YP issues met.</p>	<p>2007 and annually</p>

What do we want to achieve	How: Action that will be taken	Why do we want to do it	By Who: Lead responsibility	Resources: Premises Budget / Staff Equipment	Key indicator? How will we measure progress	By When:
of Chlamydia in <20s NI 115: Substance misuse by YP The above NIs link to alcohol use, related strategies and licensing	annually.  Mobile workshops for parents/carers on risks & pressures Teenagers Face	To increase parents/carers knowledge of above issues and discuss practical ways of supporting our YP and keeping them safe	Options	Fegans Thanet GAP 2 x Staff within current budget	Measure attendance and use feedback forms to determine effectiveness	November 2007 taster and onwards
Raise awareness with YP and the agencies that work with them regarding YP's emotional and psychological -- well being and work to raise the self-esteem of YP  NI 50: Emotional health of children  NI 51: Effectiveness of CAMHS services	Explore the potential to extend outreach of the Healthy Minds Forum to include YP and Parents  Conference for parents and agencies to raise awareness of parenting issues and support available  Raise awareness of domestic abuse and positive relationships	Mental health difficulty affects one in ten YP nationally, Early detection, intervention and treatment is essential to improving outcomes. Thanet has a high number of groups of children vulnerable to mental health disorder e.g. LAC.  DV is a very specific area that requires more focused attention and	CAMHS LIG  Kent Safe Schools: Senior Parenting Officer  KSS: DV Project Officers	N/a  Thanet Parenting Sub-group Connexions  PRG Funding	Baseline to be established from 2008 event and progress measured through Youth Survey  Feedback from evaluations  Number of schools / young people accessing the information	December 2008  February 2008  March 2008 and ongoing

What do we want to achieve	How: Action that will be taken	Why do we want to do it	By Who: Lead responsibility	Resources: Premises Budget / Staff Equipment	Key indicator? How will we measure progress	By When:
	through greater publicity and dissemination of the education pack for schools and to the wider community supported by front line support	support. It is an under-developed area in Thanet.				
Encourage wider participation in sports  NI 57: Children and young people's participation in high-quality PE and sport  NI 110: YP participation in positive activities	Provide evidence and support delivery of the TSN and Sport and Active Recreation Strategy action plans. Key linkages include; 1. Raising awareness of benefits of sport and physical activity, 2. Coach and volunteer development project 3. 'Doorstep Sport' Project	YP would like more access to sports opportunities especially for the 'non-fit'	TDC Sports Development Officer	To be contained within current TSN funding arrangements	Increase activity 1% annually from 17.7% 2006/07 baseline.  Survey users to determine prior activity levels and confirm whether target group is being reached. Targets for 2009 to be established following identification of this baseline	April 2008 onwards

What do we want to achieve	How: Action that will be taken	Why do we want to do it	By Who: Lead responsibility	Resources: Premises Budget / Staff Equipment	Key indicator? How will we measure progress	By When:
	Deliver the 7 family based MEND programmes	To ensure that YP and their families are supported in adopting long term healthy lifestyles	ECK PCT: Health Promotion /Public Health	BLF Funding Secured. KCC / TDC Schools Sports Partnership TSN	Programmes to be monitored and evaluated nationally & locally re: profile, uptake & long term change	April – March 2011

## **8 – The Action Plan: Staying Safe**

### **Issues identified by young people:**

- Young people have identified concerns regarding safety generally and in particular after dark.
- Feeling unsafe can be a barrier for young people going out in the evening
- Not enough safe places to hang out with friends at night. Young people don't always want to attend an organised activity or event but want somewhere safe to meet with friends.
- "Gangs" were identified as being intimidating. Conversations with members indicated membership of "gangs" down to own need to feel safe.
- Young people feel safer around their friends
- Peer pressure and boredom often leads to anti-social behaviour and intimidation
- Crime and anti-social behaviour is seen as a different thing, anti-social behaviour includes "gangs" and intimidation. Young people involved in the surveys felt that this isn't an illegal activity
- Issue of respect between police and young people – young people feel both sides could do more to respect each other

### **Issues identified by parents/adults/professionals:**

- 93% of respondents to the 'Parents, Carers and Professionals' survey (Summer 2007) were either concerned or very concerned about crime and anti-social behaviour amongst youth in Thanet, this was the highest level of concern raised
- The majority of adults surveyed feel that bullying is a problem in Thanet. Action they would like to see included tougher penalties for bullies, more direct action in schools at a younger age and more support/better care for victims
- Feeling that no punishments are given for petty crime/anti social behaviour.
- Lots of suggestions given for deterring anti-social behaviour e.g. long standing out of hour youth worker provision to build up relationships with young people and more provision for places to go at night, e.g. non-alcoholic bars where drinks are low cost and the facility is open late. 30% of adults surveyed in the MORI consultation felt that the provision of activities for teenagers is important in making somewhere a good place to live.

### **Issues Identified by the Staying Safe / Enjoying and Achieving Sub-group**

- Knowledge of and access to information, activities and facilities
- Low response to efforts to recruit sufficient volunteers to facilitate the growth of existing provision (through voluntary groups) and the need to support capacity building for existing groups i.e. with Criminal Records Bureau (CRB) checks

- Provision for young people with disabilities and integration of young people outside of mainstream provision
- Gaps in information around use of facilities especially regarding outdoor facilities
- Provision of out of hours adolescent services to provide support in times of crisis
- Young people's concerns regarding bullying and safety in public spaces/after dark
- Key headlines appear to be graffiti, litter, bullying and people not getting on.

## Data

- Approximately two-thirds of 11-19 year olds were concerned about bullying and gangs (National Foundation for Educational Research (NFER) study 2006)
- CRB Support was identified in the Thanet Play Strategy as an area that could usefully be developed, linked to the need to improve the provision of opportunities for young people to access quality play provision across Thanet
- Number of young offenders known to Youth Offending Service May 2006 in Thanet was 230 which is 1.7% of the total population of 10 to 17 year olds. (KCC YOS)
- The percentage of children and young people not feeling safe is greater than that in Kent. 10.5% of children aged 7 to 11 identified that they don't feel safe compared to 8.7% for Kent. 8.4% of young people aged 11 to 16 identified they don't feel safe compared to 7.7% in Kent. (KCC NFER Survey)
- The highest number of offences impacting on the youth community is within the category violence against the person. Figures show a decrease in the number of offender youths and youth on youth crime from 2005-06, but an increase in youth as victims. Youths are predominantly the victim of crimes. The majority of offenders are in the 14-16 year age bracket. (CDRP Youth Profile. 12-13)
- Between 2005-06 there was a reduction of 37 offences whereby either the victim or the offender was 17 years of age or under. Overall in 2006 youth related crime accounted for 17.6% of all crime in Thanet. (CDRP Youth Profile. 2)
- Data for April 2005-March 2006 reports an increase in detection of youths embarking in criminality at an earlier age – this relates in particular to the growth of shoplifting amongst 13 to 17 year olds and the policy of detection stores are implementing which is at odds with multi-agency policies of prevent and deter. (CDRP Youth Profile. 8-18)

## Current Provision:

- Sports4NRG a positive activity programme for young people at risk of offending
- Thanet Engage; Supported by Thanet Community Safety Partnership, Engage offers a wide range of provision ranging from an up-to-date youth diary of activities and services available for young people through to advice and support to youth workers

on a number of levels. Key activities include Summer and Easter Blast events which provide a range of activities for young people over the holiday periods.

- SAINTs Programme to improve year 7 students' awareness of personal safety issues

#### **Actions identified by young people:**

- More CCTV needed to capture individuals or groups and so police can respond to incidents faster
- Punishment for crimes should be stronger, they aren't a deterrent to a lot of young people and adults
- Overall areas with more crime should get more visible policing
- More diverse activities should be provided for young people in the evenings to accommodate a wide range of interests (e.g. American football)

#### **Actions Identified by Staying Safe / Making a Positive Contribution Sub-group:**

- Encourage greater community involvement in the provision of activities/community space for young people and their families
- Promote volunteering and support capacity building
- Raise the positive profile of young people in Thanet and work to increase inter-generational/community understanding and respect.
- Investigate the provision of/potential to extend out of hours/crisis support.
- Continue joint approach to co-ordinating and promoting activities e.g. Easter and Summer Blast to increase awareness of what is available and prevent duplications. Ensure annual consultation enables provision of activities to be prioritised according to need
- Review provision for YP with additional needs and linkages to mainstream provision
- Address bullying/safety concerns
- Early intervention and preventative measures implemented at primary school level to ensure young people are aware from a young age of the implications of becoming involved in criminal activity e.g. shoplifting

### Staying Safe

What do we want to achieve	How: Action that will be taken	Why do we want to do it	By Who: Lead responsibility	Resources: Premises Budget / Staff Equipment (Agency Sign-up)	Key indicator? How will we measure progress	By When:
<p>Improve CYP's safety / perception of safety</p> <p>NI 21: Dealing with local concerns about ASB and crime by the local council and police</p> <p>NI 110: YP participation in positive activities</p>	<p>Pilot SureStart for Teenagers project in Milmead to open up local facilities in partnership with the local community.</p>	<p>YP would like access to safer socialising places especially after dark. It may also reduce the risk of anti-social behaviour</p>	<p>KYS</p>	<p>SureStart Milmead</p>	<p>Pilot carried out and evaluated</p>	<p>April 2008</p>
	<p>Ensure detached youth provision responds to ongoing consultation</p>		<p>Thanet Engage</p>	<p>Engage Forum</p>	<p>Consultation</p>	<p>Ongoing</p>
	<p>Promote CEOP and associated training</p>	<p>YP are increasingly 'socialising' online and must be aware of the safety considerations</p>	<p>KYS</p>	<p>Kent Police TDC KCC Children, Families and Education (Ann Lord)</p>	<p>2009 Youth Survey to establish baseline on awareness and measure annually</p>	<p>April 2009</p>
	<p>Develop and promote a YP safety checklist for parents – what to be aware of in</p>	<p>To ensure children are safe and parents/carers have confidence that their children are participating in safe</p>	<p>Pipeline KYS</p>	<p>Kent Safeguarding Children's Board</p>	<p>Checklist developed and support training held</p>	<p>September 2008</p>

What do we want to achieve	How: Action that will be taken	Why do we want to do it	By Who: Lead responsibility	Resources: Premises Budget / Staff Equipment (Agency Sign-up)	Key indicator? How will we measure progress	By When:
	youth provision (e.g. need for CRB checks etc)  Explore best means of improving access to CRB support provision	activities  VCS/CRB Support has been identified in the Thanet Play Strategy as an area for development	KYS	Thanet Engage	Project Report	September 2008
Ensure linkages with the CDRP to ensure the findings of consultations are received  NI 21: Dealing with local concerns about ASB and crime by the local council and police	Develop link between CDRP and TYC	Provide a link between the CDRP and youth forum so that professionals are aware on an ongoing basis of the crime and safety issues identified by YP	Thanet Engage Executive	None	Link in place and issues reported to CDRP	Ongoing
Continue joint approach to co-ordinating and promoting activities e.g. Easter and Summer Blast /	Ensure relevant partners are involved in planning for youth events	To ensure YP are able to access a wide programme of activities to reduce the risk of anti-social behaviour	Thanet Engage Executive	Engage Forum Members	Baseline established Easter Blast 2007  Comparison: ASB levels Easter/Summer 2007 / 2008	October 2007 and ongoing

What do we want to achieve	How: Action that will be taken	Why do we want to do it	By Who: Lead responsibility	Resources: Premises Budget / Staff Equipment (Agency Sign-up)	Key indicator? How will we measure progress	By When:
Sports4NRG and the Thanet Coast Project	Develop and expand the Sports4NRG Programme		TDC Commercial Services	Within current budget	Monitor No. of programmes and % re-offending rates. Target to be established 2009.	April 2008-2009
Improve awareness of the implications of engaging in crime and ASB  NI 111 First time entrants into the Youth Justice System	Expand the Jnr YIP Crimebusters programme to all Thanet schools and the wider community	To deter YP from engaging in crime and ASB	Jnr YIP Project Lead	Engage Forum	1 community event held in each town. Pilot expansion in Margate School area	November 2008

## **8 – The Action Plan: Enjoying and Achieving**

### **Issues identified by young people:**

- Non-academic achievements aren't always valued at school so don't feel engaged
- Young people sometimes see achievements differently from adults which can lead to low self esteem if this isn't recognised
- Some young people see graffiti as an art or talent which is very different from the perception of most adults
- Lots of pressure at school to get good grades

### **Issues identified by parents/adults/professionals:**

- Attendance and behaviour are priorities in education. To achieve this young people need to be confident and want to achieve
- Raise awareness and understanding with parents and grandparents regarding the value of attendance
- Engaging young people not in mainstream education is difficult - need schools to link up with home educated children (who are home educated due to disabilities for example). There are lots of things on offer locally but often these are for groups and through schools, home educated young people find it difficult to access them, so can feel ostracised.

### **Issues Identified by the Staying Safe / Enjoying and Achieving Sub-group:**

- Need to support families to support young people develop and achieve
- Improve understanding of the value of education and attendance in schools
- The need to focus on the personal achievements of young people

### **Data:**

- NFER study indicates 11-19 year olds appeared to have lower perception of achievements compared to younger children. Approximately a quarter of 11-19 year olds felt they were doing very well at school and just over a half felt they were about average
- Absenteeism among Thanet Secondary pupils 2005/2006 in Thanet Cluster 1 & 2 9.6% and 8.9% respectively, the second and fifth highest cluster aggregates in the county. Devolved Funding KCC. 6.
- School leavers (16 to 18 year olds) with less than 5 GCSEs graded A\* to G Summer 2006 in Thanet 8.9% compared to 8.4% in Kent

### **Current Provision:**

- The Tri-Angle Awards: The award scheme recognises the efforts and achievements of young people in the community
- The Children's Society Thanet Participation Project Diary Award Scheme. The Scheme is a supported grant giving scheme targeted at 11-18 year olds that allows young people to design their own activity or project. The project involves recording how the money was spent, programme planning, monitoring delivery and publicity and was designed to empower young people, promote confidence and self-esteem and increase provision for 11-18 year olds. Young people form the panel that decides whether projects receive funding and so far they have awarded £62,540.00 to their peers to carry out 118 projects

### **Actions identified by young people:**

- More acknowledgement of non-academic achievements
- Young people should be given a reward or something concrete to take away with them after achieving something or attending an event (like Pie Factory Music do)
- Young people's talents should be celebrated so they are given a reason to engage in activities
- More positive publicity of young people and their achievements is needed in local media to change perceptions of older generations
- Graffiti walls should be provided for young people and they should be monitored by an authority figure other than the police. Look at providing these in alternative places and tackling other related problems. For example a controlled place for graffiti in local toilets to prevent further vandalism of the property.

### **Actions Identified by sub-group:**

- Increase the positive perception of young people and raise the profile of personal achievements
- Develop a youth offer to respond to the priorities identified in the Youth Strategy and encourage wide agency sign-up
- Formalise links between youth workers, agencies and schools to raise awareness of the different support and services available to facilitate greater 'reach' and accessibility
- Increase number of parents/carers accessing support services and facilitate the development of positive social norms to promote attainment and prevent family breakdown

### ***Enjoying and Achieving***

What do we want to achieve	How: Action that will be taken	Why do we want to do it	By Who: Lead responsibility	Resources: Premises Budget / Staff Equipment	Key indicator? How will we measure progress	By When:
Agency and organisation commitment to delivery of the Thanet Youth Strategy	Agree a 'Youth Offer' that responds to the issues identified e.g. commitment to consult with YP on all substantive issues	To maximise the efforts of individual agencies and organisations to improve outcomes for YP and prevent gaps being missed	Thanet Engage Executive	Youth Strategy Steering Group Partners	Offer developed for annual review	December 2008 & ongoing
Increase number of parents/carers accessing support services & facilitate the development of positive social norms	Pilot family focussed music workshop	To improve access to support services and prevent family breakdown	Pie Factory Music (PFM)	Existing PFM resources KCC Extended Schools KCHT KSS Snr Parenting Officer	Review of pilot: attendance and feedback	January 2008
Raise YP involvement in service delivery to increase engagement in positive activities and promote community understanding and respect.	Pilot a project that involves YP working with agencies to address particular issues. Showcase results at a 'celebration' event	Promote the positive profile of YP and raise awareness of their personal achievements	Engage PFM KCHT	KSS YAG and DV Project Officers KS3 Inclusion	Event Staged, attendance and feedback monitored	April 2009

What do we want to achieve	How: Action that will be taken	Why do we want to do it	By Who: Lead responsibility	Resources: Premises Budget / Staff Equipment	Key indicator? How will we measure progress	By When:
<p>Improve opportunities for YP that are outside of mainstream provision e.g. disabled YP both in terms of special support and access to mainstream services</p> <p>Increase specific activity sessions for disabled YP and publicise via TSN and YCN</p> <p>NI 110: YP participation in positive activities</p>	<p>Support the Foreland School pilot project to improve integration with mainstream services through the extended schools provision</p> <p>TDC Disability Sportslink officer to encourage mainstream providers to open access to YP with disabilities</p> <p>Ensure YCN action plan includes targeting of groups outside of mainstream provision and awareness raising of the challenges faced by YP with disabilities and their families.</p>	<p>CYP and their families that are not provided for within mainstream provision face challenges accessing the opportunities, services and facilities developed for them and CYP generally</p>	<p>Foreland School</p> <p>TDC Commercial Services – Disability Sportslink Officer</p> <p>Youth Communicators Network</p>	<p>Thanet Engage</p> <p>Within current budgets</p>	<p>Baseline for disability participation rates for Thanet to be established for 06/07 via Active People Survey. Increase activity 1% annually</p> <p>08/09 number of sessions to be monitored and targets established.</p>	<p>September 2008</p> <p>April 2008</p>

## 8 – The Action Plan: Make a Positive Contribution

### Issues identified by young people:

- It's lack of information and not necessarily lack of activities that is a problem
- Lots on offer during the summer, need more to do during the winter and in the evenings
- Information on events and activities should be made accessible and there needs to be more awareness of what's on
- Generally young people are less likely to attend an activity if it is outside of their home town
- Finding information generally is a problem (advice, guidance and services as well as activities)
- Feeling that people who run services need to listen to young people and use their views to help make improvements to services
- Not all young people like the same things and like to be communicated with in different ways
- Feeling that adults have bad perception of young people in general and people from different backgrounds in Thanet don't seem to get on very well
- Feeling that problems with litter are because people don't respect the area.

### Issues identified by parents/adults/professionals:

- Majority of adults consulted feel there is not enough for young people to do in Thanet, although most felt there have been improvements in the provision of activities over the past year
- Adults feel that people who run services do not listen to young people, although they were slightly more positive when asked how much they thought young people's views were used to improve services (43% felt either a lot or a little, 37% felt not really or not at all)
- Difficult to engage effectively with non-English speaking young people/ and their families

### Issues identified by the Achieving Economic Well Being / Making a Positive Contribution Sub-group:

- The need to improve channels for consultation and engagement with young people, in particular those outside of mainstream education
- The need to improve engagement with hard to reach young people e.g. those NEET and Looked After Children
- The need to develop channels to support greater participation in service delivery processes
- Recognise developing concerns i.e. internet safety
- The need to promote positive role models

### Data:

- 92% of young people surveyed in the Easter Blast consultation 2007 stated they would like to take part in future consultation
- Surveys carried out by TDC have indicated problems with youths are perceived as undermining community relations. MORI 2005
- MORI research shows that just one in three 11-16 year olds have ever met a councillor or MP.
- The top response to the Oi Survey 'What do you dislike about living in Thanet' was rubbish and litter. Less litter was one of the top ten responses to the question 'What three things would improve life for you and your friends in Thanet.'
- The Thanet Enquiry highlights 'population churn' as a major factor within the communities of Thanet. Cliftonville West is given as a specific example that demonstrates the issue at its most extreme. "If 1 in 3 people are in a state of transition, then whilst they may consume a significant proportion of immediate services, it is unlikely that they will be in a position to maximise the value of the intervention". The impact of this is compounded by a residual effect of the transient population, with, for example, high numbers of children becoming looked after to Kent Social Services as a result of this population movement. It is estimated that a third of the children becoming looked after in Thanet are children of the transient population. The report recommends continuation of efforts to address this issue in future planning, so that "a patchwork of services that do not account for both extremes of the population" is to be avoided and good outcomes delivered. (The Thanet Enquiry. 25.)

#### **Current Provision:**

- The Thanet Youth Council (TYC) works to enable young people to develop citizenship skills and to be represented in the democratic and decision-making processes of Thanet. It provides a forum where young people from all backgrounds can meet, talk, learn and take action on the issues that are important to them.
- The Thanet Play Strategy has been developed to improve recognition of the importance of play for young people and provide improved and more inclusive play opportunities targeted at local need. Activity to date has included increasing the provision of multi use games areas and improving the quality of public open spaces across Thanet.
- The Youth Opportunities Fund and Youth Capital Fund are administered by Kent County Council and are aimed at giving a voice to young people and help them influence the facilities available to them. This includes things to do, places to go and people to talk to etc
- Kent Youth Service (KYS) offers young people aged 11 to 25 a wide range of social and educational activities and experiences. In Thanet KYS runs the Ramsgate Youth Centre, and the Quarterdeck Youth and Leisure Centre in Margate in addition to projects including Artwise Youth Arts Centre and Thanet Detached.
- Thanet Coast Project organises and runs beach cleans and education programmes on coastal projects.

#### **Actions identified by young people:**

- Need to bridge generation gap between the young and old to overcome the issue of negative perceptions

- Papers should publicise more positive stories on young people, there could be young carers awards
- Needs to be more provision of facilities or activities that appeal to young people – live music, extreme sports etc. This should be decided after talking with young people and not just based on what adults think is wanted so that young people are more engaged and more likely to attend
- Should create an activities webpage that could link in with homepages of schools with information on what's on, where, how much etc
- Oi Magazine was good idea but distribution should be more effective for example through free local papers or handed out to individuals through tutor groups at school
- Schools should be used more for communicating wider messages to young people
- Needs to be a central point where all information on a number of issues could be accessed
- Young people want to have more of a voice and are more likely to participate or give their views if they trust they will be used, need to be able to influence or shape decisions

#### **Actions identified by sub-group:**

- Improve young people ability to impact on the decision making processes that affect their lives
- Develop and improve consultation, communication and engagement channels aligned to the 'Hear by Right' standard for agencies delivering services to young people to overcome the issue of groups being missed from ongoing activity especially those outside of mainstream education, NEET, LAC and from BME groups
- Improve take up of Youth Opportunities Fund and Youth Capital Fund
- There is clearly a great deal of information and guidance available for young people, but access is a problem, in part because of the variety of sources that it is generated from. Streamlining access via a central point would help to address this and also identify where initiatives could be joined up for better effect
- Develop a community venue that provides a central point of access to information and a greater range of activities and facilities for young people and their families targeted at times/provision where gaps have been identified. Centrally located, this will limit issues of access and as an umbrella provision the stigma attached to accessing particular services should be limited. Equally, the community focus should support intergenerational /community engagement and redress negative perceptions.
- Promote and support volunteering opportunities.

**Make a positive contribution**

What do we want to achieve	How : Action that will be taken	Why do we want to do it	By Who: Lead responsibility	Resources: Premises Budget / Staff Equipment (Agency Sign-up)	Key indicator? How will we measure progress	By When:
<p>Develop linked consultation and engagement channels with YP aligned to 'Hear by Right' Standards</p> <p>NI 3: Civic participation in the local area</p> <p>NI 4: % of people who feel they can influence decisions in their locality</p>	<p>Develop the Thanet Youth Council (TYC) as a consultation forum for the District</p> <p>Establish a 'Youth Mayor' for Thanet linked to democracy week 2008</p> <p>Bi-annual youth survey to measure progress on achieving outcomes and ensure targeted activity.</p> <p>Explore the potential with the Safer Stronger Communities Fund Board to develop a programme for engaging with YP in Cliftonville West and Margate Central</p>	<p>Young people want more involvement in the design and delivery of services that affect them</p> <p>To measure distance travelled as against baselines established in 2007(e.g. Have your Say) and monitor new need as required.</p> <p>These wards have particular needs linked to for example transient populations</p>	<p>TYC</p> <p>TYC</p> <p>TDC</p> <p>SSCF</p>	<p>TDC Children Consortia Connexions KYS KCC Extended Schools EK Healthy Schools</p> <p>Thanet Youth Strategy Steering Group Within existing Comms Budget</p> <p>Engage Steering Group</p>	<p>SLA in place</p> <p>Measure distance travelled from Sept 2007 baselines re No. of members and group/representation representation</p> <p>Youth Survey conducted response target 10% (+ 2% 2007 baseline)</p> <p>Identification of project and project lead</p>	<p>Sept 2008</p> <p>Mayoral Elections 2009</p> <p>April 2009</p> <p>March 2008</p>

What do we want to achieve	How : Action that will be taken	Why do we want to do it	By Who: Lead responsibility	Resources: Premises Budget / Staff Equipment (Agency Sign-up)	Key indicator? How will we measure progress	By When:
An efficient channel of communication that facilitates, drives and co-ordinates communication on issues relating to YP	Develop a Youth Communicators Network for professionals linked to TYC (youth reference group)	YP, parents, carers and the professionals working with them face barriers finding information concerning activities, facilities and services. This undermines access and engagement	TDC	KCHT Kent Safe Schools Children's Trust Kent Police TYC Kent Fire and Rescue Service Connexions KYS KCC Extended Schools Thanet CAMHS LIG ECK PCT: Health Promotion /Public Health EK Healthy Schools	YCN in place	April 2008
Effective communication with all YP and their families to: - Increase awareness of the services,	YCN to develop a communication / action plan that accommodates needs identified e.g. - Positive promotion of YP - Intergenerational and community relations	YP have identified particular problems with accessing information, advice and guidance  There is a widely	Youth Communicators Network	TDC KYS Pipeline	Action plan agreed  Youth Newsletter published 4 x year. First edition April 2007	March 2008  Quarterly beginning March 2008

What do we want to achieve	How : Action that will be taken	Why do we want to do it	By Who: Lead responsibility	Resources: Premises Budget / Staff Equipment (Agency Sign-up)	Key indicator? How will we measure progress	By When:
<p>activities and facilities available to YP</p> <ul style="list-style-type: none"> <li>- Improve community relations</li> <li>- Reduce negative perceptions of YP</li> </ul> <p>NI 21: dealing with local concerns about ASB and crime by the local council and police</p>	<ul style="list-style-type: none"> <li>- Continued interagency co-ordination</li> <li>- Reaching harder to reach young people e.g. LAC/children with disabilities and from BME groups</li> <li>- Development of central access point for information on activities and facilities (i.e. website linked to school homepages)</li> <li>- establish youth newsletter</li> <li>- enhance presence at multi-agency presence at youth events</li> </ul>	perceived negative perception of YP identified by YP and adults			<p>Website in place</p> <p>Measure distance travelled before plan in place and after action taken using residents and youth survey</p>	April 2009
<p>Improved access by YP to local services and facilities</p> <p>NI 9: Use of public libraries</p>	Raise awareness with Youth Service Providers regarding the facilities and opportunities available in the Thanet Gateway	To increase uptake of youth access point to services and local facilities (e.g. the library)	Youth Communicators Network	Connexions KCHT	Presence of youth service providers in the Gateway	February 2008 and ongoing

What do we want to achieve	How : Action that will be taken	Why do we want to do it	By Who: Lead responsibility	Resources: Premises Budget / Staff Equipment (Agency Sign-up)	Key indicator? How will we measure progress	By When:
Establish a central point of access to support services, activities and facilities for the whole community	Pilot a community venue in a central location supported by multi-agency participation	To provide YP with a central point for information and more appealing activities especially in evenings and the Winter. To support community engagement & access to family services	Pipeline	TDC Global Generation	Opening of Venue	September 2008
Promote volunteering and support capacity building  NI 6 Participation in regular volunteering	Seek funding to extend the role of voluntary organisation field officer	To support capacity building in the VCS and maintain volunteering support programmes for YP	KYS		Funding achieved	September 2008

## **8 – The Action Plan: Achieve Economic Well Being**

### **Issues identified by young people:**

- Housing benefit forms are difficult to complete
- Homelessness can occur because of the problems parents (rather than their children) are facing
- Parents don't always want to seek professional help, would rather keep quiet about problems
- Not enough jobs for young people in Thanet
- Difficulties with accessing public transport for disabled people and the cost generally
- Feeling that some shops discriminate on the grounds of age and disability

### **Issues identified by parents/adults/professionals:**

- More provision/services needed for homeless teenage girls
- Suitable housing provision is needed for young people in Thanet and service providers need to be more young-person friendly
- Should be an accredited list of landlords to house young people more appropriately
- Accommodation offered to people from a BME background is inadequate

### **Issues identified by the Achieving Economic Well Being / Making a Positive Contribution Sub-group:**

- Lack of appropriate accommodation/move on accommodation for young people linked to barriers presented by rent deposit requirements, single room rent regulation, complexity of benefit forms and governance issues in the private rental sector etc. The absence of suitable move on accommodation is cited as a reason for young people re-offending on leaving institutions
- Limited dedicated housing support for females
- Young people have unrealistic expectations of social housing support available and lack knowledge regarding the barriers to accessing support and responsibilities involved in maintaining private tenancies
- Significance of family breakdown as reason for young people's homelessness
- Need to improve co-ordination between service providers for housing and homeless support
- Need to prepare/support children transition into youth and youth into adulthood
- Availability of jobs for young people

**Data:**

- 75% of adults feel there is not enough support available for young people. When asked in more detail this was felt to be more due to lack of awareness of what is available.
- Whilst more in-depth analysis is required to enable accurate conclusions to be drawn, TDC homelessness acceptance figures indicate 'parents no longer willing to accommodate' as the main reason for homelessness with 16/17 year olds. However focussed early intervention activity within the family by trained TDC housing options officers to resolve issues before they reach crisis point have led to a reduction in homelessness acceptances figures from 26 in 05/06 to 11 in 06/07.
- Kent Supporting Team Needs Analysis indicates the need for greater temporary accommodation and alternatives to B & B's for vulnerable single homeless (particularly 16/17 year olds). Thanet is noted as having particular shortages. (Report Updated Needs Analysis: Kent Supporting Team May 2007. 12.)
- According to the 2002 Stock Condition Survey 39% of families in Thanet live in non-decent accommodation. This information is somewhat dated and will be revised in the 2008 Survey.
- Thanet's NEET figures as at October 2007 for 16, 17 and 18 year olds are in the region of 420, which is approximately 10% of this cohort.
- Nearly 1 in 3 households in Thanet do not have access to a car or a van... The limitations of such levels of inaccessibility are wide ranging – from employment to children's activities and impact on ... children's development and the capacity of preventative services to deliver. The Thanet Inquiry. 18.
- Data for March 2005 show that Thanet, the most deprived district in Kent, has the highest level of LAC in the County at 21.2 per 1000 population (10-17); by comparison Kent figures are 8.1 per 1000 population (10-17). (Report Updated Needs Analysis: Kent Supporting Team May 2007. 61.)

**Current Provision:**

- Connexions Kent and Medway provides free, impartial and confidential advice, guidance and support for young people from the age of 13 moving through their teens towards adult working life. Personal advisers can provide initial advice and guidance as well as substantial one to one support. Connexions access points are available in Margate and Ramsgate
- Rainer 16+ Leaving Care provides young people aged 16+ living in foster care or residential care, to make the most of opportunities available to them and provide transitional support to independent living
- The Lighthouse Project Thanet is a residential project for young men and women between 16 and 25 years, who need a secure home from which to plan and actively re-launch their lives. Every person coming to the Lighthouse benefits from a personal Keyworker and is assisted in implementing an agreed individual support plan.

- Moving Forward provides advice guidance and practical support for young people age 16-21 years (up to 25 in some instances) needing to live independently. Through one-to-one support individuals are helped to manage the issues of living on their own including accessing housing, benefits, budgeting and specialist advice. Workshops and activities are also provided to enable YP to access employment, education and/or training.

**Actions identified by young people:**

- Earlier intervention for problems that eventually can lead to homelessness. For example an easier way for parents to seek help to prevent children having to leave home
- A programme that would give young people work would be supported

**Actions identified by Achieving Economic Well Being / Making a Positive Contribution Sub-group:**

- Investigate housing support need for young females to identify whether gaps in provision are legitimate
- Raise awareness at early stage in/with schools of homelessness issues and provision
- Develop preferred/accredited young persons landlord list to improve standard of accommodation available to young people
- Address issue of stigma attached to accessing support services by raising the profile of universal support providers like Connexions
- Develop inter-agency/organisation training re the 'Joint Protocol to address the needs of homeless young people aged 16-21 in Kent' / benefit forms. Raising awareness of the Protocol should help to address some issues arising from out of area placements into Thanet
- Improve links between schools and service providers to raise the value of school to young people and reduce vulnerability to NEET
- Continue focussed activity to reduce barriers to accessing appropriate housing / housing support and maintain prevention and intervention activity
- Reduce young people's vulnerability to NEET and increase support into Employment, Education and Training (EET)

### Achieve Economic Well Being

What do we want to achieve	How: Action that will be taken	Why do we want to do it	By Who: Lead responsibility	Resources: Premises Budget / Staff Equipment (Agency Sign-up)	Key indicator? How will we measure progress	By When:
<p>Continued reduction in youth homelessness and the number of those living in temporary accommodation through:</p> <ul style="list-style-type: none"> <li>- better access to appropriate housing / housing support and advice.</li> <li>- enhanced prevention and intervention activity</li> <li>- Raise awareness of the roles and responsibilities of agencies providing YP with housing support</li> <li>- greater YP awareness regarding housing</li> </ul>	<p>TDC to continue early intervention activity and develop initiatives to address barriers as identified. Initial projects to include piloting a workshop on completing benefit forms for organisations working with YP</p>	<p>Barriers have been identified that contribute to levels of homelessness e.g. difficulty with forms and the lack of suitable move on accommodation</p>	<p>Vicky Harley Housing Options TDC</p>	<p>Within Current Budget</p>	<p>Increase homelessness prevention figures from 2006/07 baseline for 16/17 year olds by 25%</p>	<p>Ongoing</p>
	<p>Explore potential to develop a 'Gold Star Scheme' for private landlord sector to improve governance. Ensure YP housing needs are considered within development of the programme</p>	<p>To improve the availability of suitable move-on accommodation for CYP</p>	<p>TDC Community Services</p>	<p>To be agreed through the development of the scheme</p>	<p>Results of investigation in potential for scheme</p>	<p>April 2009</p>
	<p>Carry out joint training and awareness raising</p>	<p>Effectively implemented the Protocol will</p>	<p>Vicky Harley Housing Options</p>	<p>Within Current Budget</p>	<p>Training sessions held</p>	<p>April 2009</p>

What do we want to achieve	How: Action that will be taken	Why do we want to do it	By Who: Lead responsibility	Resources: Premises Budget / Staff Equipment (Agency Sign-up)	Key indicator? How will we measure progress	By When:
and homelessness issues  NI 141: Number of vulnerable people achieving independent living	activity related to the Joint Protocol  Participate in the Kent Housing Education Programme	streamline services & improve inter-agency work to meet the needs of homeless YP  To ensure YP have an accurate understanding of homelessness issues and provision available	TDC  Ashley Stacey Housing Strategy and Enabling	Connexions KCHT	Awareness levels measured against 'Information, Advice and Guidance' baselines established in 2007 Survey	Programme details TBC
Identify levels of need with respect to: a) female housing support b) children leaving care	Carry out a mapping exercise of need and use results to determine appropriate response	To develop a comprehensive understanding of levels of need and identify what if any additional intervention is required these target groups	a) Connexions  b) Vicky Harley Housing Options TDC	KCC Supporting People Team KCHT  Mapping to the contained within Current Budget. Action plan to be determined based on need identified	Data available and project plan developed	a) September 2008  b) Mapping Complete March 2008. Action Plan Developed September 2008

What do we want to achieve	How: Action that will be taken	Why do we want to do it	By Who: Lead responsibility	Resources: Premises Budget / Staff Equipment (Agency Sign-up)	Key indicator? How will we measure progress	By When:
<p>Reduce vulnerability to NEET</p> <p>Support YP back into EET</p> <p>NI 117: 16-18 year old NEETs NI 148: Care Leavers in EET NI 106: YP from low income backgrounds moving to HE</p>	<p>Develop links with Prince's Trust and relevant education and business partnerships to improve employment and training opportunities</p> <p>Deliver 3 projects annually to support YP back into EET. Projects to include:</p> <ul style="list-style-type: none"> <li>- vocational occupation</li> <li>- Peer mentoring</li> <li>- Accredited qualification</li> </ul>	<p>YP in Thanet face challenges maintaining or accessing employment and training opportunities.</p> <p>Greater access to employment and training opportunities will improve socio-economic outcomes for YP</p>	<p>Connexions</p> <p>Kent Community Foundation</p>	<p>Within Connexions Resources</p> <p>Pipeline PFM</p>	<p>Reduce 06/07 NEET figures by 4%</p> <p>24 YP annually return to EET Attendance and accreditation monitored</p>	<p>Ongoing from September 2007</p> <p>April 2009 and annually</p>
<p>Improve YP access to out of hours support provision</p>	<p>Raise the profile of 'Connexions Direct' to ensure YP are aware of the out of hours support available</p>	<p>Improved access to support can prevent issues reaching crisis state especially for YP that have limited support structures in place (e.g. children leaving care)</p>	<p>Connexions</p>	<p>Youth Communicators Network</p>	<p>Baseline for Kent area use of line before and after promotional activity</p>	<p>TBC</p>
<p>Improve YP access to/ensure providers are aware of the barriers YP face accessing public</p>	<p>Ensure survey results fed into KCC review of bus pilot scheme</p>	<p>Cost is a barrier to accessing public transport provision. This inhibits access to health provision, employment</p>	<p>TDC Youth Strategy Lead</p>	<p>None</p>	<p>Response Received</p>	<p>Review 2008</p>

What do we want to achieve	How: Action that will be taken	Why do we want to do it	By Who: Lead responsibility	Resources: Premises Budget / Staff Equipment (Agency Sign-up)	Key indicator? How will we measure progress	By When:
accessing public transport facilities	Explore feasibility of developing a youth bus route – pilot at Lark in the Park	provision, employment opportunities and activities.	Engage	PFM		September 2008

## Appendix A

### Glossary:

**CDRP:** The Thanet Community Safety Partnership. The Partnership aims to make Thanet a progressively safer place in which to live.

**CEOP:** The Child Exploitation and Online Protection Centre. The Centre works to work across the UK and maximises international links to tackle child sex abuse wherever and whenever it happens.  
<http://www.ceop.gov.uk>

**EET:** Employment Education or Training.

**Extended School Provision:**

An extended school recognises that it cannot work alone in helping children and young people to achieve their potential, and therefore decides to work in partnership with other agencies that have an interest in outcomes for children and young people, and with the local community.

**KCHT:** Provides a range of support services to children, young people and their families:

**Moving Forward** provides advice, guidance and practical support for young people age 16-21 years (up to 25 in some instances) needing to live independently. Through one-to-one support individuals are helped to manage the issues of living on their own including accessing housing, benefits, budgeting and specialist advice. Workshops and activities are also provided to enable YP to access employment, education and/or training.

**Breakthrough** provides support for young people and their families age 10-16 years (up to 19 in some instances) who are experiencing difficulties. Breakthrough is predominately an early intervention and preventative service aiming to support families before they reach crisis point. Through mediation, individual and group support, young people and their families are encouraged to identify their strengths and difficulties. Families are supported to explore areas where changes in attitude and response may improve communication and relationships at the earliest stage possible.

**Breakthrough Plus** is a community based project for children and young people aged 0-19 years and their families/carers. Through mediation, one to one support, workshops, school clinics and community based activities families and young people are encouraged to look for solutions to their difficulties

- KSS:** Kent Safe Schools works to ensure that the physical and emotional well being of children both within school and the wider community. Activity co-ordinated by the programme includes peer mentoring and youth action – including peer led activities that focus on school and community issues, emotional literacy, social and emotional development, self-esteem and diversionary activities. KSS activity reduces bullying, combats anti-social behaviour, strengthens emotional resilience, removes barriers to education (e.g. attendance) and deters youth crime.
- NEET:** YP Not in Employment Education or Training. It is believed that many young people who are NEET are from disadvantaged backgrounds and experience disadvantage in later life.
- PiP+:** The Primary Intervention Programme provides early intervention services for children and families within targeted primary schools in Thanet. A multi agency team consisting of Behaviour Workers, Social Work Assistants, Kent Safe School Officers, KCA Sunlight Workers, Primary Mental Health Worker, Speech and Language Therapist and School Nurse provide a range of group and individual work addressing needs as identified through the referral and assessment process.
- Thanet Engage:** The Engaging Youth Forum is part of the Thanet Community Safety Partnership and aims to make Thanet a safer place to live, work and visit. Part of that work includes making sure there's plenty on offer to keep young people occupied during the summer months and joining up the efforts of professional service providers (paid & voluntary groups) to support a co-ordinated approach.
- Thanet Children's Consortia:** The Consortia is a multi agency board which has been established to meet the needs of children and Families in Thanet.
- Thanet Detached:** A team of detached youth workers responding to needs identified across Thanet, for example where youth centres are not in place.
- TxT:** (Take Time 2 Talk) is an early intervention, multi-agency support service for young people and their families which aims to build on existing support available in secondary school within Thanet. A multi-agency team, comprised of a number of services that work within schools (e.g. the Adolescent Resource Centre, TXT Social Work Assistants, Breakthrough, Breakthrough Plus, Connexions, Kent Safe Schools, Sexual Health, School Nursing and Primary Mental Health), TxT is able to provide support on a variety of issues including settling into a new school, family concerns, relationships, gender issues, self-confidence, bullying, drug/alcohol misuse and anger management.

## Appendix B:

The Thanet Youth Strategy Steering Group was comprised of:

George Allum	Kent Police
Mike Andrea	Thanet Engage/Pipeline
Bill Butler	KCC Communities
Claire Barham	Eastern and Coastal PCT
Emily Bridges	KCC Supporting People Team
Claire Buckingham	ECK PCT: Health Promotion/Public Health
Steve Butler	KCA
Martyn Cassell	TDC - Leisure
Nigel Cross	Thanet Youth Council
Elizabeth Dean	KCC Extended Schools
Suzanne Dowse	TDC – Corporate Projects
Mike Fagg	Thanet Engage/Pie Factory Music
Louise Fisher	Youth Offending Service
Cllr Jo Gideon	TDC portfolio holder: Health and Communities
Vaughan Hawthorne-Nelson	The Kent Children’s Fund
Angela Johnson	KCHT (Breakthrough/Breakthrough Plus/ Moving Forward)
Beth Kier	Kent Safe Schools (KSS)
Paul Martin	TDC – Health Strategy Lead
Anne Nerva	KCC Children, Families and Education
Phil Pittock	KCC Extended Schools
Sally Potter	Connexions
Ann Rayment	The Children’s Society
Brendan Ryan	TDC - Community Services
Nick Skilton	Jigsaw4U
Ashley Stacey	TDC - Housing
Hannah Thorpe	TDC – Consultation
Lucy Tuson	TDC – Communication
Nedine Watson-Cutts	KCC Children, Families and Education / Children’s Consortia
Steve Wright	Kent Fire and Rescue Service
Karen Woolcott	Lighthouse Project

## Appendix C:

### Youth Strategy Consultation Process Summary

A comprehensive consultation process was carried out to engage with CYP, parents/carers and the agencies/organisations that work with them. This was carried out in three stages:

#### 1. Establish baseline data on needs and aspirations

Extensive research into previous consultation data was carried out initially to identify the priority areas for YP and relevant groups in Thanet. The findings from this research were then taken to the steering group and developed to form the basis of the summer consultation and to facilitate more in-depth analysis of initial priorities identified. These priorities included; crime and anti-social behaviour, safety and bullying, families and role models, being healthy/healthy lifestyles, activities and facilities for YP, extending participation, housing/homelessness and perceptions of achievement.

#### 2. Consult with YP, parents/carers and the agencies/organisations that work with them to confirm priority areas and develop greater understanding of the issues raised.

The second step in the process was therefore to develop the priority areas identified further through a wide-ranging eight- week consultation.

The consultation was launched at the end of July 2007 through 'Oi!' magazine, a publication produced by pupils from the Marlowe Academy and over 20,000 copies were distributed to secondary schools, youth clubs, organisations and agencies across Thanet.

The consultation process included a short survey to identify the key headlines of life for young people in Thanet, two focussed surveys to explore the priority areas in more detail (one for young people and one for adults), focus groups to enable more detailed analysis of issues in a group setting and informal on-street interviews to discuss priority areas on a one-to-one basis.

Surveys were distributed to youth groups, organisations and local secondary schools, and were available to complete online. Face to face consultation was carried out through attendance to community forums, events throughout the summer, and on-street in key locations.

Consultation was targeted to ensure as many 11-19 year olds were engaged in the process as possible, including groups known to be harder to reach, for example, children with disabilities, looked after children and children from BME communities or not in employment, education or training. Outreach activity was also undertaken in key areas and venues in Thanet to support consultation with these groups.

1,300 short surveys were returned and almost 350 YP participated in the more focussed consultation. Results showed that messages from YP reflected what had been identified in previous consultation and some priorities mirrored general concerns raised by adults. There were approximately 100 responses to the parents/carers and professional survey.

#### 3. Confirming consultation results

To take forward action planning for the strategy, further consultation was carried out with YP and service providers to ensure that efforts are targeted and joined up appropriately. This has been to ensure an effective response to the consultation results. A key example in this phase was participation in the Thanet Youth Council Annual Conference where the best means of improving communication with YP was explored.

This consultation process has provided the steering group and partner organisations with baseline information on the issues identified, it is intended that the survey will be repeated bi-annually to measure distance travelled and identify new need as appropriate.

# Thanet Children and Young People's Play Strategy

## Appendix D

### CHILDREN AND YOUNG PEOPLE'S PLAY STRATEGY 2007 - 2010

#### 1. INTRODUCTION

##### 1.1 Purpose

This document sets out the Children and Young People's Play Strategy for Thanet. Its purpose is to establish a strategic framework and direction for the next three years for all matters relating to play to support the improvement of play opportunities for children and young people and engagement of their families in this. It sits within the wider context of matters relating to children and young people nationally and regionally. It is intended to be responsive at a local level to the key policies at a county level

This strategy is intended to achieve the following:

- To acknowledge the importance of play for children and young people both for themselves and for communities in general;
- To ensure that children's play is recognised and embedded in the work of all agencies and is embedded within key strategic plans and initiatives of all relevant agencies;
- To identify the work of all agencies involved in providing play opportunities for children and young people to assist in developing a co-ordinated approach, identifying gaps in provision and reducing duplication;
- To make effective use of funding, including but not limited to that available through the Children's Play initiative;
- To ensure that sustainability is built into children's play provision in the longer term;
- To improve children's access to safe places to play and socialise;
- To provide more and better local and inclusive play opportunities where they are most needed, evidence by the results of audits and community engagement;
- To improve public open spaces as an environment for play;
- To use the strategy to develop a portfolio of children's play projects to support a funding application to the Big Lottery Fund under the Children's Play Initiative;

The strategy has been developed and agreed by the Thanet Children's Play Partnership and has been informed by discussion with a range of key partners and a range of consultation involving the general

## Thanet Children and Young People's Play Strategy

community, children and young people. The organisations invited to the Thanet Play Partnership are detailed in Appendix A. Consultation approaches; findings and outcomes can be found in section 5.

### 1.2 The Approach

In order to develop this Children and Young People's Play Strategy a range of organisations and agencies involved in providing for children and young people were invited to join the Thanet Play Partnership. The Partnership comprised representatives from the public, voluntary and community sectors and a not-for-profit organisation. Members were invited to represent their organisation, share and contribute their expertise and agree the scope, vision and priorities for action. Terms of reference for the Partnership were agreed.

Thanet District Council through the Portfolio Holders facilitated the Play Partnership for Housing and Community and Commercial Services and the Senior Leisure Officer.

### 1.3 Scope

The Strategy has encompassed four stages of development:

1. An audit of the opportunities for Children and Young People's play that are provided within the Thanet District Council area providing a benchmark standard of provision in terms of quality, quantity and accessibility, and the identification of gaps thereby ensuring that new initiatives and projects delivered as a result of this strategy fill a strategic need.
2. A review of consultation involving key partners, the wider community and children and young people to ensure that the views are reflected in this strategy and in subsequent action plans.
3. The production of a Key Policy Statement, with a supporting Action Plan, including a set of outcomes and outputs with defined timescales for delivery, against which the delivery of the Play Strategy can be reviewed, monitored and evaluated.
4. The establishment of the Thanet Play Partnership with representatives from the public, private and community / voluntary sectors who will direct and steer the development and delivery of the Play Strategy over its lifetime.

The Strategy recognises the role of the public, private and voluntary / community sectors in providing play opportunities for children and young people. However, its focus is in ensuring a cohesive approach

## Thanet Children and Young People's Play Strategy

to free, accessible opportunities for children and young people to engage in play.

It is recognised that play can take place almost anywhere. **This strategy focuses on the provision of designated play areas, play provision and open spaces for use by children and young people within the 0 – 18 age group.** This Children and Young People's Play Strategy applies to all children and young people under the age of 18. References made to either 'children', 'young people' or to 'children and young people' should be taken to include this full age range.

Children and young people's play opportunities within this scope must conform to the '3 free's', namely they must be free of charge, children and young people must be free to come and go and the activities must be freely chosen by the children and young people.

Formal sports provision, whether targeted towards children and young people or not, is considered to be outside the scope of this strategy; it is dealt with in the developing Thanet Sport and Active Recreation Strategy.

In developing the Children and Young People's Play Strategy the Partnership is mindful of the limited resources (people and funding (revenue and capital)) that are currently available to Thanet District Council and its partners, a situation that is unlikely to improve in the near future.

### 1.4 What is Play?

Different people have different definitions of play. For young children play can involve cognitive, imaginative, creative, emotional and social aspects which all contribute to a child's learning and development. Play is the means by which children express their impulse to explore, experiment and understand. Children of all ages play. Some children however may need support to play and their needs must be taken into account. Part of the Action Plan specifically addresses this key issue. Older children and young people are not likely to describe what they do as play. For them they need space, time and freedom to do what they want. This may involve positive activities, challenge and / or the enjoyment of reaction provision where this is appropriate. For all ages groups however play is what children and young people do when they follow their own ideas, in their own way and for their own reasons.

The Children's Play Council states that the following definition of play is widely accepted within the playwork sector: "Play is freely chosen, personally directed, intrinsically motivated behaviour that actively engages the child... Play can be fun or serious. Through play children

## Thanet Children and Young People's Play Strategy

explore social, material and imaginary worlds and their relationship with them, elaborating all the while a flexible range of responses to the challenges they encounter. By playing, children learn and develop as individuals and as members of the community" (*From Best Play – what play provision should do for children NPFA / PLAYLINK / Children's Play Council (2001)*).

The Thanet Play Partnership therefore supports this definition. The Partnership also concluded that its understanding of Children's Play was of activity that was freely chosen, freely directed, free to access and most of all fun.

Play provision can also mean different things to different people. For the purpose of the Children and Young People's Play strategy play provision is considered to be a space, facilities or equipment or a set of activities intended to give children and young people the opportunity to engage in play, as defined above.

Play provision may include play areas or playgrounds, usually unstaffed. Other provision may be staffed by adults offering guidance and supervision including adventure playgrounds, holiday play schemes, parent and toddler groups and mobile play projects or play buses, some of which may be open access. Other provision includes skate parks, BMX tracks, basketball courts, multi-use games areas (MUGAS) and teen or youth shelters. Formal childcare may offer opportunities for play however; this is considered to be beyond the scope of this strategy. School facilities also include space for play, although not all are freely accessible to children and young people outside of school hours.

Play is different from organised sports, groups, clubs and classes, which are clearly defined by external rules and definitions, and usually controlled by adults.

### 1.5 Types of Play

There are many types of play and these may include the following:

- *Exploratory Play* which can be handling, throwing, banging or mouthing objectives e.g. stacking bricks;
- *Fantasy Play* is play that rearranges the world from the child's perspective in a way that is unlikely to occur e.g. to pretend at being a racing driver or a pop star;
- *Imaginative Play* where conventional rules do not apply e.g. imagining you are an object, e.g. a tree or a ship
- *Locomotor Play* where movement is applied e.g. chase, tag, hide and seek etc

## Thanet Children and Young People's Play Strategy

- *Mastery Play* which uses the physical ingredients of our natural environment e.g. digging holes, altering the course of streams, building dams, constructing shelters, building fires etc
- *Object Play* uses an infinite and interesting sequence of hand-eye manipulations and movements which could be examining and use of any object e.g. cup, cloth, paintbrush etc
- *Role Play* explores ways of being for example brushing with a broom, using a telephone or driving a car.

Play is therefore not simply about playgrounds at the local park or open space. It can and does take place anywhere.

### 1.6 **Our Vision for Play in Thanet**

To provide a range of quality, inclusive and accessible play opportunities for every child and young person in Thanet which are available throughout the year and which are informed by the views of children and young people.

To deliver our vision the Thanet Play Partnership will work in collaboration with all relevant agencies and communities to ensure play opportunities provided are realistic, deliverable and sustainable.

### 1.7 **Mission Statement**

Every child and young person has a right to engage in play and to have access to appropriate play provision. The play needs of children and young people will be identified through consultation with children, young people and their communities and agencies, met by working in partnership with public agencies, voluntary and private organisations and local communities and at all times directly contributing to the 5 outcomes of the Children Act (2004).

## 2 **MAKING A CASE FOR PLAY**

### 2.1 **Value and Significance of play for children and young people**

Numerous benefits derive from the act of play, some of which may include:

- Play is enjoyable;
- Play promotes children and young people's development, learning, creativity, independence, self esteem, knowledge and understanding;
- Play keeps children and young people healthy and active, and active children become active adults;
- Play fosters social inclusion and helps children and young people understand the people and places in their lives and also

## Thanet Children and Young People's Play Strategy

to learn about their environment and develop their sense of community involvement;

- Play is therapeutic and helps children and young people to deal with difficult and / or painful circumstances such as emotional stress or medical treatment;
- Play gives children and young people the chance to let off steam and have fun;
- Play offers the chance for children and young people to test their boundaries;
- Play also helps to reduce their involvement of children and young people in antisocial behaviour and also plays a part in community cohesion.

Children and young people's opportunities for play are becoming increasingly limited by factors outside of their control:

<b>Restrictions children and young people face</b>	<b>What we intend to do</b>
Restrictions over their freedom to choose how and when they play, especially in their opportunities to play without adult supervision;	Increase the range of options for play, ensure safe play opportunities, provide supervised play opportunities;
Restrictions by a lack of access to good quality, safe play opportunities;	Increase the number of play spaces. Work towards Thanet's PPPG17 play standard, providing quality, accessible play spaces;
A lack of suitable play environments for children and young people with disabilities;	See Action Plan Children and Young People sub-group to engage with children and young people with disabilities to develop further plans and priorities.
Society's perceptions of the risks and levels of safety attached to children's play;	Communications sub-group to develop a series of information publications for parents e.g. Children and Young People Factsheets;
The dominance of the car in residential roads making them potentially unsafe;	Localised provision;
Lack of tolerance for children and young people playing or 'hanging around';	Communications sub-group to address. Localised provision, increased opportunities for engagement in play activities to reduce 'hanging around'. Provision of dedicated 'hanging around' spaces;
Pressures on young people having to study to meet academic targets;	Increased flexible opportunities. Children and young people sub group ensures responsive to need;

## Thanet Children and Young People's Play Strategy

Restrictions children and young people face	What we intend to do
Lack of free opportunities;	Increased free opportunities;

### 2.2 Contribution Play makes to wider agendas

Play is a fundamental part of childhood. It is so closely related to all aspects of a child's development that it cannot be viewed in isolation. It is inextricably linked to, and underpins, many key agendas and delivers on several different levels.

**Health and Wellbeing:** Play is crucial to health and development throughout childhood, contributing to social, physical, intellectual, cultural, emotional and psychological development. The physical activity involved in energetic children's play provides children and young people with a significant amount of their regular exercise. School aged children and young people get as much exercise in free play as they do from more structured activities.

Good play opportunities promote good social, mental and emotional health, giving children and young people the opportunity to try out and experience a range of emotions e.g. excitement, fear, in a 'safe' way. It allows them to learn and develop emotionally by promoting resilience and fostering self-esteem.

Halting the rising childhood obesity levels (from 9.6% in 1995 to 13.7% in 2003) has been at the forefront of Government activity since 2004, with the introduction of a PSA target for reducing childhood obesity levels in children between the ages of 5 – 10. Whilst school sport and children's nutrition is seen as the major factors to tackle increasing generally physical activity levels through play also has a part to play.

The recommended levels of physical activity for children and young people are 60 minutes per day of at least moderate – intense physical activity. There is increased evidence to suggest that increased opportunity for free play is the most effective way for ensuring this for children and young people and that a range of increasing health problems are associated with the decline in play opportunities.

The Government White Paper Choosing Health (2004) noted that 'many children appear to have less time being physically active because of the increase in car use and heightened concern about the potential risks of unsupervised play outdoors.'

## Thanet Children and Young People's Play Strategy

There is also evidence to suggest that there is a rise in mental illness amongst children and young people, with the Mental Health Foundation suggesting that at any one time 20% of children are experiencing psychological problems. Their report, Bright Futures, states that opportunities for risk-taking in unsupervised play helps children build self-confidence and resilience, key protective factors for mental health.

### **Education (Informal Learning) and Intellectual Development:**

Through play children learn numeracy, literacy and motor skills through non-formal means.

**Safer Communities / Crime Reduction:** Improve diversionary youth activity to prevent crime.

**Liveability (Cleaner, Safer, Greener):** Improved quality of play spaces.

**Every Child Matters and Children's Trusts:** Play is intrinsic to and delivers against the 5 key outcomes: Being Healthy, Staying Safe, Enjoying and Achieving, Making a positive contribution and Achieving economic well-being.

**Community Regeneration and Engagement:** Through consultation with communities, including children and young people.

**Social Inclusion:** Parental responsibilities, playing together.

**Child Poverty:** Contribution to a child's quality of life, personal and social development and learning experiences.

**Lifelong Learning:** Training for play workers / volunteers, parental roles and responsibilities, education by health visitors and midwives, accreditation and qualifications.

**Cultural Strategies, including Sports and Arts Strategies:** Close links to sports activities and opportunities, and creative activities and opportunities.

## 3. CONTEXT – SETTING THE SCENE

### 3.1 Play in national, regional and local contexts

The role of play and its importance to individuals, families and communities is reflected within a number of national, regional and local policies.

## **Thanet Children and Young People's Play Strategy**

### **United Nations (UN) Convention on the Rights of the Child (Article 31)**

The Thanet Play Strategy reflects the UN Convention for the Rights of the Child, Article 31, which states that:

- Parties recognise the right of the child to rest and leisure, to engage in play and recreational activities appropriate to the age of the child and to participate freely in cultural life and arts;
- Parties shall respect and promote the right of the child to participate fully in cultural and artistic life and shall encourage the provision of appropriate and equal opportunities for artistic, recreation and leisure activities.

It is also accepted that Articles 2,3,12,13 and 15 are also relevant.

### **The National Context for Play**

In 2002 the Department for Culture Media and Sport (DCMS) commissioned a research programme into Children's Play by the Children's Play Council. The report highlighted a lack of strategic direction and a long-term decline in investment for the provision of children's play. The report also identified the adverse consequences of this approach in terms of the physical, emotional and social health of children and young people. The key recommendations arising from the report was that there should be a National Children's Plays Strategy for England to guide and support local authorities, voluntary organisations, community groups and other local agencies in providing a comprehensive range of free, inclusive spaces and opportunities for children's play.

### **Getting Serious About Play**

In 2004 the report of the National Play Review, "Getting Serious About Play" (DCMS, 2004), chaired by Frank Dobson MP recommended that a targeted strategic lottery programme for play provision should seek to create thousands of free, inclusive play spaces based on needs and wishes of local children and young people. It recommended that the investment should be long-term, sustainable and strategic, with local authorities being given the responsibility for co-ordinating places with local partners. In January 2005 the government accepted this review and its recommendation and announced that a cross-department strategic agenda for play would be established. In March 2005 the Big Lottery Fund announced a £155 million fund to be based on the Dobson recommendation with particular emphasis on strategic development.

### **Enjoy and Achieve**

## Thanet Children and Young People's Play Strategy

The Minister for Children stated that play will receive a greater attention within the Every Child Matters inspection framework, as a key aspect of the 'Enjoy and achieve' outcomes of the change for children's programme.

### **Choosing Health Physical Activity Action Plan (Department of Health DH)**

More access to active, outdoor play opportunities has also been identified as a key to combating childhood obesity making the play agenda a serious issue for all Council's Children's Services, Local Strategic Partnerships and Children and Young People's Partnerships.

### **Cross-departmental national strategy**

The Children's Play Council and the Children's Play Policy Forum recommend a cross-departmental national strategy for play that engages with the Every Child Matters (see below), Choosing Health and Cleaner, Safer, Greener agendas and with other initiatives within the area of community regeneration in order to establish a cohesive programme of long-term investment.

### **Every Child Matters (2004)**

Every Child Matters outlines 5 key outcomes for Children and Young People: Being healthy, staying safe, enjoying and achieving, making a positive contribution and enjoying economic well being. In the context of play these outcomes are defined as:

**Being Healthy:** The opportunity for active play, whether playing freely outdoors, using play equipment or playing ball games etc can help children and young people become more active, thus helping to reduce the incidence of childhood obesity and health problems in later life. Such play can also develop essential skills such as teamwork and co-ordination and help in interacting with other Children and Young People, developing self esteem, making friends and peer support. Skills developed through play also help to underpin subsequent participation in sport and other games.

**Staying Safe:** Play is fundamental element in Children and Young People learning to appreciate, assess and take calculated risks, essential to the development of confidence and abilities in childhood. Children and Young People can become more self-reliant through play and can be better placed to look after themselves and others and learn to make judgements about safe places to place as those that pose a greater degree of risk.

**Enjoying and Achieving:** Learning through play contributes to problem solving, language and literacy skills. Play provides

## Thanet Children and Young People's Play Strategy

opportunities to test boundaries with peers and parents. Children and Young People develop self esteem and positive outlooks on life through the enjoyment of play. Children and Young People should be allowed to play and enjoy themselves for its own sake.

**Making a Positive Contribution:** Play empowers Children and Young People and enables them to learn social skills that help them to participate in decision making in other settings.

**Achieving Economic Well Being:** Not directly linked to Children and Young People themselves but the increasing demand for qualified, trained play workers provides employment opportunities for many adults.

**Youth Matters and the Next Steps (2005/06):** A Government Green Paper which led to a wide ranging consultation had over 19,000 responses from children and young people and over 5,000 responses from groups led to a follow up document 'Youth Matters the Next steps', published in March 2006 and set out a vision to transform the lives of every young person through a radical reshaping of provision.

The main theme and proposals centres around the engagement of young people in shaping local services. One of the key outcomes was the introduction of the Youth Opportunity Fund (YOF) and the Youth Capital Fund (YCF). For Kent this has meant of funding allocation over the 2006 – 2009 period, of £1.2m for the Youth Capital Fund and £1.4 million for Youth Opportunity Fund.

### 3.2 Regional Context for Children's Play

Currently there is no lobbying or co-ordinating agency that can offer support on funding and advocacy at regional levels with the responsibility for Children's Play, as there is for sport (Sport England South East Region). Play is not considered in this context as a standalone discipline nor does it feature within any of the key regional documents (SEEDA Business Plan), Regional Economic Strategy etc). The Lottery-funded Play England initiative has regional representation and with a 5 year funding proposed to promote best practice and development in Play across England, it is likely that this gap will soon be filled.

### 3.3 County Context for Children's Play

#### Vision for Kent 2006

The Kent County Council Vision for Kent has the following key themes:

- Economic Success

## Thanet Children and Young People's Play Strategy

- Learning for everyone
- Improved health, care and well being
- Environmental excellence
- Stronger and safer communities
- Enjoying life

The Children and Young People's Play Strategy contributes towards this vision for Kent by identifying opportunities for young people to learn new skills, improve their health and enjoy life.

### **Kent Children and Young People's Plan 2006 – 2009**

'Positive About Our Future' outlines the following vision for children and young people of Kent: In Kent's successful communities, achievement exceeds aspiration, diversity is valued and every child and family is supported. Children and young people are positive about their future and are at the heart of joined up service planning. They are:

- Nurtured and encouraged at home;
- Inspired and motivated at school;
- Safe and secure in the community;
- Living healthy and fulfilled lives;

Specifically the following priorities are of relevance to the Children and Young People' Play Strategy:

**Staying Safe – Priority 9** – Ensuring that children and young people are safe and feel safe in the communities where they live, go to school, play, work and travel.

**Key Actions:** (46) – to be developed locally to reflect priorities of Crime and Disorder Partnership Strategies and District Councils, likely to include safe and accessible play, recreation, transport, road safety and implementation of Kent's anti-bullying strategy.

### **Enjoying and Achieving – Issues identified**

Top 3 priority for 2005 Children's conference.

Identified:

- more after school clubs and general clubs such as football, music and social clubs;
- more teachers and more school play equipment
- more safe opportunities to play.

### **Making a positive contribution – Issues identified**

Many children and young people would welcome more social and sports activities, both in and out of school – usually identified as skateboarding and BMX.

## **Thanet Children and Young People's Play Strategy**

### **Priority 15 (LAA7)**

Improve participation and engagement by all children and young people and their families in youth, cultural and community activity.

#### **Key Actions –**

**(74)** Develop Youth Matters including the development and implementation of District Youth Strategies and ensure effective engagement of young people in design and delivery of 'youth offers' and distribution of youth opportunities and capital fund.

**(75)** Develop and implement District Play Strategies to provide opportunities for all ages to participate in safe recreational activities, out of school clubs and holiday play schemes.

### **Kent Local Area Agreement**

Within the 4 themes and 18 outcomes of the Kent Local Area Agreement (Children and Young People, safer and Stronger Communities, Healthier Communities and Older People and Economic Development) the Children and Young People's Play Strategy will contribute towards the following outcomes:

- Improve participation and engagement by all children and young people in youth, cultural and community activities;
- To promote and improve the health of Kent's residents and improve health inequalities by addressing variations in health across the county.

### **3.4 Local Context for Children's Play**

In order to ensure the viability and long-term sustainability of the Play Strategy the links to key local strategies are critical. If the Strategy does not reflect the priorities and help to deliver against actions outlined in the Thanet Community Strategy or the Corporate Plan (produced by Thanet District Council) then it will be impossible to achieve.

### **Thanet's Community Strategy**

In 2008 the Thanet LSP will become part of the East Kent LSP, the action Plan of this Strategy provides the mechanism to ensure that the priorities identified will be reflected in the East Kent Community Strategy which will replace the Thanet Community Strategy.

### **Thanet District Council's Corporate Plan**

## Thanet Children and Young People's Play Strategy

The Corporate Plan (2007-11) sets out the Council's vision for Thanet along with its plans and priorities for delivering local services. The Children and Young People's Play Strategy has synergy with the Corporate Plan in the following:

- Theme 5: Healthy Communities: Increase opportunities for exercise and play by;
  - b) developing and improving play areas in Margate and Ramsgate
  - c) improving our swimming pools and associated leisure facilities
  - d) seeking further funding for clubs and facilities which promote sport for all ages and abilities

### **Thanet's Community Safety Partnership Strategy**

The four themes of the Thanet Community Safety Partnership are reducing crime, feeling safe and being safe, tackling anti-social behaviour and addressing substance misuse. Following a strategic review in 2007 a new Community Safety Partnership Strategy will be developed; in the delivery of this strategy we will ensure that the priorities identified are reflected in the revised strategy.

### **3.5 Profile of the Thanet area**

Thanet is located on the north-east coast of Kent and covers an area of approximately 103 square kilometres. It is made up of a number of small towns with Margate, Ramsgate and Broadstairs being the major towns. It also has a large rural hinterland encompassing a number of villages..

#### **Demographics**

Its population is estimated to be 127,900 (Office of National Statistics, 2004), with the largest proportion of residents being between the ages of 55 – 59, with a higher number of people over the age of 65 than the national average. Black and minority ethnic communities make up less than 5% of the population.

Its population of children and young people, in common with the trend nationally, is falling.

Thanet has a population of children and young people from the ages of 0 – 18 of 30,276.

#### **Deprivation**

The area faces considerable socio-economic disadvantages. Average earnings are below the national and regional averages with Thanet

## **Thanet Children and Young People's Play Strategy**

having the lowest gross weekly pay of all the district council areas of Kent. Employment rates of 69% are below the national average of 75% and are lower than the south east and county averages. GSCE results are poor with 46% of schools in the area achieving 5+ A\* - C grades compared with a regional result of 55% in 2004.

The under achievement of educational results is coupled with relatively high levels of deprivation. Thanet has high levels of deprivation compared with all local councils as approximately 24% of the population live in the most deprived areas in the country. Overall the district ranks at 62 out of the 354 council areas nationally for deprivation (English Indices of Deprivation 2007, December 2007 DCLG). These levels of deprivation also impact on the general health of residents with fewer than the national average reporting them in good health during the 2001 Census.

These statistics are reflected in severe pockets of deprivation as evidenced by the Indices of Multiple Deprivation (2004).

Taking levels of deprivation and the density of children and young people together it is apparent that deprivation and higher densities of children are concentrated in a number of wards, namely Central Harbour, Cliftonville West, Dane Valley, Eastcliff, Garlinge, Margate Central, Nethercourt, Newington, Northwood, Sir Moses Montefiore and Westgate-on-Sea. This defines where the priorities for children's play should be placed. This strategy seeks to recognise these areas of concern and address them through targeted work via the Strategy Action Plan and the portfolio of projects to be developed.

### **4 Current Provision for Play**

#### **4.1 Local Authority Provision**

Thanet District Council has a discretionary responsibility as a local authority to provide and develop play opportunities for children and young people across the district. Currently play is referred to directly and indirectly within the Corporate Plan and the Community Strategy. Current direct service provision covers fixed play sites and facilities for young people. Indirectly, through grant contributions and partnership working it also provides summer play schemes. The Council is also involved in open space development and improvement.

The Council has no staff with a specific remit for children and young people's play. Responsibility is shared amongst a number of service areas, as follows:

## Thanet Children and Young People's Play Strategy

Commercial Services: maintenance funding and safety checks of 33 fixed play area sites (shared with Thanet Leisureforce, the Council's operator), refurbishment of existing and provision of new play sites and youth facilities through partnership working and open spaces improvement and development. It is also the employing authority for an externally funded post targeting young engagement and young offenders via sports participation.

Housing and Community Services: provision of play areas for children and young people on Council owned housing estates, hosting of the Community Safety Partnership including the Engaging Youth Forum and Community Wardens;

Development Services: provision of new open spaces and recreation areas in new development, securing 106 contributions from developers for appropriate play and open space development;

Environmental Services: responsibilities for public health and enforcement e.g. dog fouling.

### **PPG17 Play Areas Audit**

Catchment mapping for fixed play sites has been undertaken as part of the Council's PPG17 study. The PPG 17 assessment considered provision for children and young people according to the following categories:

*Children's Play:* 3 categories:

- Local equipped areas for Play (LEAP),
- Neighbourhood Equipped areas for Play (NEAP) and
- 'unclassified' (where sites do not fit into either classification)

*Young People:* 3 categories:

- wheeled play facilities (skateboarding and BMX),
- ball courts, multi-use games areas (MUGA's) and
- teen shelters

The audit identified that there are 35 play areas within the district, 33 of which are owned by district / parish councils, 1 owned by the Ministry of Defence and 1 by a private developer. The findings suggested deficiencies in terms of both the quantity and quality of play area provision across the district, as well as a requirement of additional provision for specific activities.

The PPG17 study also considered other types of provision e.g. parks, recreation grounds and formal sports facilities which are also of

## **Thanet Children and Young People's Play Strategy**

relevance to this strategy as they also provide areas where children and young people frequently play.

### **4.2 Play Provision by Partners**

A large number of partnership agencies and groups from the public, private and voluntary / community sectors are involved in providing play opportunities across the district. Provision ranges from out of school clubs, playschemes, soft play, youth clubs, uniformed organisations, parent and toddler groups etc.

The Engaging Youth Partnership is currently undertaking work in connection with identifying a range of opportunities for children and young people throughout Thanet.

### **4.3 Analysis of provision relative to needs and population**

**PPG 17 Findings** - based on the defined catchment areas of 0.87km the map attached as Appendix B (Map 7c) clearly identify that there are a number of built up areas within Thanet which have no local play provision of their own. These areas will be prioritised within the Action Plan and the portfolio of projects to be developed..

### **4.4 Management arrangements**

The play areas considered by the PPG17 audit are almost without exception provided by Thanet District Council or the Parish Councils. Responsibilities for inspection fall to both Thanet District Council and Thanet Leisureforce. Maintenance funding is managed by Thanet District Council but carried out by Thanet Leisureforce.

## **5 REVIEW OF COMMUNITY ENGAGEMENT and CONSULTATION**

### **5.1 Approach to Consultation**

Consultation forms a key part of any strategy and is fundamental to ensuring it is relevant to meet the needs of the community and to driving it forward. Done well, it provides evidence of need and also identifies what is already being done well, as well as areas for improvement and gaps in provision. Consultation can also raise the profile of the project or strategy and ensure that it features on the agendas of all relevant partners. Good community engagement is also crucial to the development of a successful strategy, to ensure the strategy itself and the resulting action plan meets the needs of all stakeholders and users and potential users and to ensure that all partners have a 'buy in'.

## Thanet Children and Young People's Play Strategy

In terms of identifying consultees for the Play and Young Peoples' Strategy, the potential audience was split into two groups, each with their own set of needs, issues and idea.

Firstly there are the **Play Users**. These are defined as those who will be using the facilities / activities provided by the delivery of the Play and Young Peoples' Strategy. Essentially this the children and young people themselves, maybe their parents / guardians, within the Thanet area. Their input is vital, not least because the success or otherwise of this strategy is likely to be based on the views of children and young people of the facilities / opportunities provided and also in direct measurement of the number of children and young people using the facilities/ opportunities arising from the implementation of this strategy.

Secondly there are the **Play Providers**. In the Thanet area there are a wide range of partners delivering [play provision across the area. All of these partners need to be engaged in the development and delivery of the strategy. Many of these partners experience significant barriers in providing for play, which ultimately impacts on the quality, quantity and accessibility of play provision. They also have ideas for projects or initiatives which have come directly from their own consultation with users but which may require support in seeing them come to fruition. Many such partners are represented on the Thanet Play Partnership.

A variety of approaches were used as the basis for community engagement. Owing to the prevalence of community consultation already being undertaken by Thanet District Council and its partners in which the needs of specific areas, children and young people featured prominently, this was used as the basis for informing this strategy, supplemented as necessary where gaps were identified.

### 5.2 **Specific Consultation Undertaken and Findings and Conclusions**

#### 5.2.1 **Planning Policy Guidance 17 (PPG 17) Open Spaces Assessment**

A PPG17 assessment of open space and sport and recreation provision (including Children and Young People's play areas was undertaken in 2005-06, in accordance with the guidance. The audit considered quality, quantity and accessibility issues. A range of consultation methods to ascertain the views of the local community, key interest groups and wider stakeholders were used. These included:

- Postal surveys to 100 schools (with a 100% response rate after follow up)
- 30 stakeholder interviews;
- All Parish Councils
- 500 door to door surveys (randomly selected)

## **Thanet Children and Young People's Play Strategy**

- 145 sports clubs (100% response rate, after follow up);

### **5.2.2 Cliftonville West Renewal Area Consultation**

As part of major consultation for the above views were sought in relation to what was needed for the area. A large scale consultation event at Margate's Winter Gardens took place, with wide scale involvement of the local community, voluntary organisations and other interested parties.

### **5.2.3 Kent Children's Fund Consultation – Milmead Surestart Centre**

Consultation was undertaken by the Kent Children's Fund with the Thanet Youth (MMK) project targeting children and young people age 5 – 13 from the Milmead area on Cliftonville. A co-ordinator from KCF was supported by a participation worker from Participate by Right. 20 children and young people were consulted.

### **5.2.4 Participate by Right! (Kent Children's Fund Network) – Be Active Event**

Participate by Right! is a participation project led by Kent Children's Fund Network, which was asked by Thanet Consortium to lead on a consultation exercise with children and young people in Thanet. The 'Be Active' event brought together 98 disadvantaged and vulnerable children and young people between the ages of 5 - 13 from across Thanet in an event over two days. The aim of the event was to consult with the children and young people on the six priorities as identified by the Adult Thanet Consortium. The priorities were explored through workshops and captured the needs, views and experiences of the children and young people.

### **5.2.5 Thanet Coast Project**

As part of the Thanet Youth Council Citizenship Conference consultation was undertaken with children and young people in relation to what they currently do and what they would like to do using Thanet's natural assets of the coastal areas.

## **5.3 Findings and Conclusions**

### **5.3.1 PPG 17 Findings**

Attached as Appendices B, C and D are the graphical findings for the above Study. Map 7a identifies the location of formal play area and youth facilities, Map 7b identifies the location of formal play areas and youth facilities by quality and Map 7c identifies the accessibility of those facilities based on a travel distance of 0.78km. This travel distance has been arrived at based on the findings of the consultation undertaken to support the PPG17 study.

## Thanet Children and Young People's Play Strategy

The maps provide a clear indication of the distribution of the facilities throughout Thanet. The lack of quality facilities is also apparent. Specifically there are a number of locations that are not well served by accessible, local play provision, most notably within the wards of Westbrook, Cliftonville West, Cliftonville East, Viking, St Peter's, Salmestone, Central Harbour and Sir Moses Montefiore. This also closely correlates, although not exclusively, with wards with high density populations of children and young people and multiple deprivation.

### 5.3.2 **Cliftonville West Renewal Area Consultation**

There was overwhelming support for the need for more activities and facilities for children and young people. These included:

- Safe and secure play areas for 0 – 19 year olds
- Adventure Play area;
- Mini nature reserves;
- Places for teenagers, including alcohol-free bars and supervised well-lit places for teenagers to gather, without the threat of being moved on by the Police e.g. teenage shelters, seating areas;
- Free skate parks/ climbing wall;
- Football pitch;
- Winter ice skating rink;
- Indoor and recreational facility;
- 5-a-side football;
- Free facilities for teenagers;
- Music workshops.

The lack of facilities is noted elsewhere as well as the significant deprivation experienced in this area.

### 5.3.3 **Kent Children's Fund Consultation – Milmead Surestart Centre**

The suggestions from these children and young people ranged from: Parks - ... a place at parks like a wall – a graffiti wall with huts nearby, a Skatepark, tall climbing frame, a merry go round.

Art / Drama / Music – more places to go and play music, more art because I like drawing, more places to draw instead of at home, more MC fly shows.

Seaside – more play equipment: swings, slides and trampolines, more bins, play travel buses, more play things, less rubbish, no glass obstacles. Slides, more play things, more beach balls for when people come and play, no litter;

Youth clubs: more youth clubs because there aren't many;

## Thanet Children and Young People's Play Strategy

### 5.3.4 Participate by Right

The findings of relevance to this children and young people's play strategy included the following:

**Community Safety:** more parks and places to play, more clubs for children of different ages e.g. sport, summer clubs, art, after school, more safe places to meet people and make friends, better swimming pools.

**Play:** children and young people identified that they enjoy:

Outdoor activities – active / sport e.g. football and cricket

Creative activities – arts / crafts / making things

Music and drama – singing / dancing / playing instruments

Trampolines

Being with friends and family, at home or in local parks particularly Ellington Park, Ramsgate

School clubs – during and after school.

The children and young people were very clear about the things, which they felt are stopping them from accessing play opportunities:

- Distance from home
- Lack of confidence to try new things
- Access to sports with trained coaches
- Not enough sport for children of all ages
- Not knowing about things going on in their local area
- Money – not being able to pay for more expensive activities
- Safety – not able to do certain activities as perceived to be dangerous by parents
- Not able to access clubs they enjoy doing in school or out of school i.e. football and cricket

**Emotional wellbeing:** children and young people identified what things made them happy and unhappy in school, after school and in the holidays.

In terms of after school the responses included sport, spending time with family and friends and playing out, particularly parks and bikes. Bullying featured as an issue to and from school, particularly on school buses. During holiday periods things making children and young people happy included being with friends, summer clubs sports, going to the park. Things that made children and young people unhappy during the holidays included being bored with nothing to do and no places to play.

## Thanet Children and Young People's Play Strategy

The children and young people were very clear that in order for them to feel happier there needed to be an increase in the number of clubs and sports available. They identified a wide and varied range of sports and clubs they would like the opportunity to take part in. The clubs included arts and craft, cookery, singing, dancing and games. The children and young people cited that they were currently unable to access clubs and sports which are available due to a lack of money or access to transport. They also identified that local parks needed to be improved and made safer for children and young people to play in.

When children and young people were asked which they felt was the most important workshop to them both age groups sited safety, happy and play as the most important workshops.

The clear themes that have emerged from this consultation of relevance to the Children and Young People's Play Strategy are:

**Clubs:** more of them with a bigger variety, easily accessible and sports with coaches;

**Bullying:** the need to address it in and out of school;

**Being listened to:** adults not listening to children and young people in and out of school;

**Local Parks:** improvements, more activities and safer;

**Safer streets:** gangs, lighting;

**Services available to children and young people in Thanet:** raising awareness, information points in schools and a booklet, which is child friendly;

**Development of a Thanet Children's Council:** children and young people can continue to have their voices heard about the issues and decisions, which affect them.

### 5.3.5 Thanet Coast Project

A range of activities including nature, art, sport, in the sea, food, attractions and other suggestions were made by the children and young people.

Nature: wild life, rock pooling, fishing, learning about animals, learning to rescue wildlife and people;

Art – sand paintings, sand castle competitions, sand sculpting;

Sports – horse riding, football;

In the sea – swimming, high dive board from prom, surfing, ringos;

Food: BBQ's;

Other: sunbathing, fun, donkeys, parties, being with friends, going for walks, getting fresh air, dram contests, dance, quizzes.

### Conclusions

## Thanet Children and Young People's Play Strategy

There are some key trends emerging from the consultation. These relate to play provision in its broadest sense, but there are also wider social issues that appear regularly, which appear to impact negatively on the usage and popularity of what is already provided. More things to do, more promotion of what is already available, better quality environments in which to play are all features that arise again and again.

In order to begin shaping the future provision for play opportunities it is necessary to establish mechanisms and initiatives which may help overcome the barriers to provision and also to help develop ideas and opportunities which have been identified through the consultation process. Clearly this needs to be led by the feedback received and by interpreting their responses to inform the action plan. It is also important to recognise that the play providers themselves are also conduits for feedback gathered through their informal networks, informed by demand and need as identified by the communities they represent.

### **5.4 Balancing Risk: Safe Play**

Consultation has demonstrated that children and young people are placing a high priority on safe places to play. This not only means ensuring that equipped and other play areas are safe and maintained to high standards but more specifically that they are socially safe and free from fear of attack, bullying and intimidation.

Frequently children and young people who play and use public spaces are perceived as a threat by the general public. The Action Plan identifies the means to address the issue of tolerance so that children and young people are able to experience acceptable risk and overcome challenges, within an atmosphere of support and acceptance. Play provision that does not cater for this need could fail, with the result that children and young children seeks thrills and excitement elsewhere, potentially with harmful consequences. A degree of managed risk in play provision is therefore essential.

Health and Safety Law requires providers to assess and manage risk and adopt strategies to minimise accidents and prevent injuries. This has led to play areas that offer little challenge or enjoyment in un-stimulating environments. Not only is this a poor use of resources but often the facilities are underused by children and young people and become a focus for vandalism and abuse. It should be accepted that accidents cannot be entirely avoided and it can be argued that falls and scrapes in childhood are all part of growing up, of learning about boundaries and how to manage risk. Indeed the Health and Safety Executive (HSE) supports this view: "*We recognise the benefits to*

## Thanet Children and Young People's Play Strategy

*children's development of play, which necessarily involves some risk and this shouldn't be sacrificed in the pursuit of the unachievable goal of absolute safety."*

Fundamental to the development of Thanet's Play Strategy is the need to ensure that policies and risk management procedures provide the right balance between children and young people's needs and wishes and providers concerns about having a robust defence against negligence claims.

## 6 PLAY POLICY STATEMENTS

### 6.1 Key policy statements

Informed by audits and consultation with children and young people and all agencies involved in providing opportunities for children and young people and linking into the strategies and key priorities of all agencies the following Play Policy Statements have been developed and agreed. These set out the key objectives of the Strategy and will underpin the action plans arising from the Strategy.

The Play Policy Statements are as follows:

#### **A Partnership Approach to Play**

To ensure that the Children and Young People's Play Strategy is linked to wider national, regional and local strategies and is an effective tool for delivering sustainable, high quality play opportunities across Thanet by all organisations involved in the delivery of play opportunities for children and young people.

#### **New and Improved Play Opportunities**

To provide a range of new and improved sustainable play opportunities, for children and young people across the whole of the Thanet area, underpinned by the involvement of children and young people in their development.

#### **Involving Children and Young People**

To ensure that children and young people are regularly consulted on their play needs and involved in decisions affecting sustainable play provision for children and young people.

#### **Providing Opportunities for Safe Play**

To provide sustainable, safe opportunities for children and young people to play, balancing risk and the need for challenge and the requirement to protect children and young people.

#### **Promoting Play**

## **Thanet Children and Young People's Play Strategy**

To raise the profile of Children's Play, encourage greater awareness of the importance of Play for children and young people, their families and the community and improve the promotion of play opportunities across Thanet.

### **Accessibility and Inclusivity**

Ensure equality of access of play opportunities so that all children and young people have the opportunity to access play provision, which is accessible and inclusive.

### **Training and Support**

To provide training and support to all those involved in the provision of opportunities for children and young people with the aim of improving the quality of provision of play opportunities for children and young people across Thanet.

### **Monitoring and Evaluation**

To ensure that all play opportunities are adequately and appropriately evaluated in order to constantly improve the quality of Play provision across Thanet.

## **6.2 Links with wider strategic documents**

All of the above statements are in accord with the wider strategic documents covered in earlier sections of this strategy.

## **7 LOCAL STANDARDS**

### **7.1 Explanation of standards proposed - Quantity**

The PPG17 Open Spaces assessment of play areas across the district for equipped play areas, ball play, wheeled play and teenage shelters identifies that Thanet currently has 0.035ha of provision per 1,000 population (based on 4,40ha of overall provision). This is well below the national recommended standards of 0.8ha per 1,000 population.

If the current standard of provision were to be based on the 0 -16 population (25,526) the current standard of provision would be 0.17ha / 1,000 population (0 -1 6). However, the consultation process identified that there is a requirement for additional play areas for young people, particularly for teenagers and a wheeled play area for quad bikes and off road bikes for young people. The existing play areas also require fencing. This means that there is an identified deficiency in play provision. To take account of these findings, and the consultation carried out, the District Council has set an aspirational local standard of provision for the 0 – 16 age group at 0.3ha / 1,000 population (0 – 16 years).

## Thanet Children and Young People's Play Strategy

There is therefore a deficiency in provision (as at 2006) of 0.13ha / 1,000 children of 0 – 16. This strategy will seek to reduce this deficiency over the 3-year period.

### 7.2 Quality Standards

In terms of quality standards the PPG17 audit identified that the average quality of play areas across the district is 26.12% which equates to a 'below average' rating.

This finding can be addressed through fencing of a number of the pay areas, which will lead to an increase in quality perception.

The standard to aim for is a 'Good' rating. A 'Good' site is one which provides an appropriate infrastructure to facilitate usage e.g. signage, seating and bins, and is clean, safe and welcoming. In relation to this typology provides the appropriate play facilities, play value and environment for the age group to which it is targeted. This will also be addressed as part of the Action Plan of the 3-year strategy.

### 7.3 Accessibility Standards

The consultation undertaken suggests that most users walk to access local provision. Given the role and purpose of play areas there is a need for facility provision close to home. The National Playing Fields Association (NPFA) set a number of standards for provision for catchment areas for different categories of play area. These have historically been used in Thanet to inform planning policies. Standards of provision have been based on consultation results, with a comparison shown against the NPFA standards. Based on the consultation results, the average walking distance equates to 0.87km. This standard will be used in the Action Plan of this 3-year strategy.

## 8 ACTION PLAN

Informed by the audit undertaken, consultation with key delivery agencies and community engagement and organised according to the Play Policy Statements above, the Action Plan outlines how the Strategy will be delivered in practice. It should be noted that the Strategy assumes that the level of resources of all partners is at the current levels (with the exception of the BLF funding for projects). Therefore, the Strategy can be considered as practical and achievable.

This is a working document and timescales and responsibilities have been provisionally identified, although may be subject to change. Where deadlines are known these have been completed. It is anticipated that this Action Plan will be reviewed on an annual basis and an Action Plan for the following financial year agreed.

## **Thanet Children and Young People's Play Strategy**

As part of the consultation process all partners have been asked for their comments and for any other ideas or actions, which have not been included.

The final Strategy and Action Plan will be endorsed by Thanet District Council.

# Thanet Children and Young People's Play Strategy

## 8.1 Action Plan 2007- 2010

<b>PP1 – A PARTNERSHIP APPROACH TO PLAY TO MAXIMISE RESOURCES</b>					
<b>Objective</b>	<b>Outcome</b>	<b>Output</b>	<b>Timescale</b>	<b>How</b>	<b>Who</b>
<b>To ensure that the Children and Young People's Play Strategy is linked to wider national, regional and local strategies and is an effective tool for delivering high quality play opportunities across Thanet by all organisations involved in the delivery of play opportunities for children and young people.</b>	Approve the Play Strategy	Strategic approach to play provision linked to national and regional objectives	March 2007	Agreed by the TPP. Submitted to TDC ECMT for approval	TDC
			January 2008	Approved by TDC Cabinet.	TDC
	Agree Action Plan annually	Annually prioritised actions for improved play provision, informed by community consultation	March 2008 and annually thereafter	Agreed by the TPP. Approved by TDC Cabinet.	TPP TDC
	Seek / secure funding for delivery of play strategy (new and existing)	Improved play provision delivered by all partners across Thanet	On-going	Resources sub-group of TPP to provide advice and support and act as 'banker' as required	TPP TDC

## Thanet Children and Young People's Play Strategy

<b>PP1 – A PARTNERSHIP APPROACH TO PLAY TO MAXIMISE RESOURCES</b>					
<b>Objective</b>	<b>Outcome</b>	<b>Output</b>	<b>Timescale</b>	<b>How</b>	<b>Who</b>
	Deliver Play Strategy, with annual review of achievements	Improved play provision delivered by all partners across Thanet	2007 - 2010	Targets and responsibilities allocated and agreed. Action plan monitored quarterly	TPP
	Play Partnership linked with Children's Consortia and East Kent LSP to ensure consistency within Strategies	Play Strategy linked to/reflected in the developing Thanet Children and Young Peoples plans and East Kent Community Strategy	March 2008	TDC to provide link with Thanet Children's Consortia and EK LSP	TDC (Portfolio Holders/ Head of Commercial Services / Head of Improvement and Performance

## Thanet Children and Young People's Play Strategy

<b>PP1 – A PARTNERSHIP APPROACH TO PLAY TO MAXIMISE RESOURCES</b>					
<b>Objective</b>	<b>Outcome</b>	<b>Output</b>	<b>Timescale</b>	<b>How</b>	<b>Who</b>
	Promote cross-sector partnership working to achieve aims of Children and Young People's Play Strategy	Improved play provision across Thanet. Added value to all play projects.	On-going	Composition of TPP reviewed annually to ensure key organisations represented  Comms plan for strategy to be developed and linked to Youth Strategy Youth Communicator s Network	TPP  TPP

## Thanet Children and Young People's Play Strategy

<b>PP2 – NEW AND IMPROVED PLAY OPPORTUNITIES</b>					
<b>Objective</b>	<b>Outcome</b>	<b>Output</b>	<b>Timescale</b>	<b>How</b>	<b>Who</b>
<b>To provide a range of new and improved play opportunities, for children and young people across Thanet, underpinned by the involvement of children and young people.</b>	Deliver Annual Action Plan for play	Improved play facilities for children and young people across Thanet	March 2007 and annually thereafter (2010)	Establish Consultation sub-group of TPP.  Consultation programme established to inform annual priorities	TPP  TPP (Children and Young People Sub-Group)
	Deliver site improvements as outlined in PPG17study	Improved play facilities (quality / accessibility) in accordance with approved local standards of provision	March 2008 and annually thereafter	Return of TDC sites to in-house management  Additional funding bids from TDC / Housing  S106 agreements to be pursued	TDC  TDC  TDC (Planning)

## Thanet Children and Young People's Play Strategy

<b>PP2 – NEW AND IMPROVED PLAY OPPORTUNITIES</b>					
<b>Objective</b>	<b>Outcome</b>	<b>Output</b>	<b>Timescale</b>	<b>How</b>	<b>Who</b>
	Annual audit of play opportunities across all sectors and identification of gaps	Creation and maintenance of play activities database. Identification of gaps.	March 2008 and annually thereafter	Development of web-based opportunities for children and young people  Update of PPG17 / GIS to identify deficiencies	TPP / Engaging Youth Forum / KCC Y & C  TDC (Planning)
	Development and delivery of enhanced opportunities for play in priority areas	Improved play opportunities in identified areas	March 2008 and annually thereafter	Projects identified as part of portfolio of projects for BLF funding, informed by consultation with Children and Young People	TPP  TPP (Children and Young People Sub-Group)
	Development and delivery of active play / creative play sessions	Increased range and choice of play activities across Thanet	March 2008 and annually thereafter	Projects identified as part of portfolio of projects for BLF funding, informed by further consultation with Children and Young People	TPP / TDC / KCC / Engaging Youth

## Thanet Children and Young People's Play Strategy

<b>PP2 – NEW AND IMPROVED PLAY OPPORTUNITIES</b>					
<b>Objective</b>	<b>Outcome</b>	<b>Output</b>	<b>Timescale</b>	<b>How</b>	<b>Who</b>
	Development and delivery of play opportunities in schools / extended schools	Improved play opportunities utilising school sites	March 2008 and annually thereafter	KCC to lead on Building Schools for the Future project	TDC KCC

## Thanet Children and Young People's Play Strategy

<b>PP3 – INVOLVING CHILDREN AND YOUNG PEOPLE</b>					
<b>Objective</b>	<b>Outcome</b>	<b>Output</b>	<b>Timescale</b>	<b>How</b>	<b>Who</b>
<b>To ensure that children and young people are regularly consulted on their play needs and involved in decisions affecting play provision for children and young people.</b>	Develop and deliver on-going programme of consultation into needs and wants of children and young people and barriers to participation	Results to inform appropriate play provision	September 2007 and annually thereafter	Children and Young People Sub-Group to coordinate development of consultation plan for Play linked to the Youth Strategy consultation and communication channels	TPP (Children and Young People Sub-Group  Engaging Youth Group  KCC
	Establish / utilise existing consultation and feedback mechanisms for involving children and young people in decisions with regard to new and enhanced play opportunities	Increased involvement from all partners. E.g. TPP, Thanet Youth Council, School Councils and Cluster Groups leading to Increase in use of play areas. Reduction in ABS / vandalism.	September 2007 and six monthly thereafter	Children and Young People Sub-Group to link to Youth Strategy consultation and communication channels	TPP/ TDC/ KCC

# Thanet Children and Young People's Play Strategy

## Thanet Children and Young People's Play Strategy

<b>PP4 – PROVIDING SAFE OPPORTUNITIES FOR PLAY</b>					
<b>Objective</b>	<b>Outcome</b>	<b>Output</b>	<b>Timescale</b>	<b>How</b>	<b>Who</b>
<b>To provide safe opportunities for children and young people to play, balancing risk and the need for challenge</b>	Ensure minimum standards for play provision met (MPFA 6 Acre standard for built playground provision / minimum standards for built play equipment EN1176 & EN1177 with equivalent PAS standard for wheeled and built court facilities)	Improved quality of play provision	March 2008	TDC management of sites to ensure new facilities meet adopted standards	TDC
	Link Play Strategy to revised Community Safety Strategy	Reduction in ABS / vandalism on play sites	When Community Safety Strategy revised)	TDC to provide input into process	TDC

## Thanet Children and Young People's Play Strategy

<b>PP4 – PROVIDING SAFE OPPORTUNITIES FOR PLAY</b>					
<b>Objective</b>	<b>Outcome</b>	<b>Output</b>	<b>Timescale</b>	<b>How</b>	<b>Who</b>
	Raise awareness of requirements for play provision e.g. CRB checks	Improved awareness of requirements and improved quality of service offered in line with relevant legislation	March 2008 and annually thereafter	Communications sub-group to develop communication action plan	Communications Sub-Group
	Involvement of Community Wardens / community groups in play areas	Reduction in ABS / vandalism. Increase in use of play areas	March 2008 and annually thereafter	Discussions with residents associations / community groups/ wardens  Outreach workers to make links	TPP (Communications sub-group)
	On-going consultation with play users and non-users	Increase in use of play areas.	September 2007 and annually thereafter	Annual consultation programme established to inform annual priorities	TPP (Children and Young People Sub-Group)

## Thanet Children and Young People's Play Strategy

<b>PP5 – PROMOTING PLAY</b>					
<b>Objective</b>	<b>Outcome</b>	<b>Output</b>	<b>Timescale</b>	<b>How</b>	<b>Who</b>
<b>To raise the profile of Children's Play, encourage greater awareness of the importance of Play for children and young people, their families and the community and improve the promotion of play opportunities across Thanet.</b>	<p>Develop marketing plan and communications strategy to include:</p> <p>Development of play web pages, linked to partners websites</p> <p>Marketing aimed at specific target groups</p>	<p>Improved awareness of play provision and increased profile for play and recognition of contribution play makes to wider agendas by all partners and stakeholder</p>	<p>March 2008 for Communications / Marketing Plan</p>	<p>Communications sub-group develop marketing plan to raise awareness of Play Strategy</p>	<p>TPP (Communications Sub-Group)</p>

## Thanet Children and Young People's Play Strategy

<b>PP6 – ACCESSIBILITY AND INCLUSIVITY</b>					
<b>Objective</b>	<b>Outcome</b>	<b>Output</b>	<b>Timescale</b>	<b>How</b>	<b>Who</b>
Ensure equality of access of play opportunities so that all children and young people have the opportunity to access play provision, which is accessible and inclusive.	Assess sites and venues for DDA compliance and inclusive play opportunities and develop action plans for addressing issues identified	All sites and venues accessible and inclusive for all users	March 2008 and annually thereafter	Via ROSPA assessment of all sites  Specialist input from Jigsaw 4 U / TADSAD	TDC (ROSPA)  Thanet Cando  TADSAD
	Ensure reach hard to reach groups are aware and able to access play provision / benefit from developments with this strategy	Increased participation by hard to reach groups	September 2007	Utilise developing Youth Strategy consultation and communication channels and work with partners within TPP to ensure target groups reached and needs identified	TPP (Children and Young People Sub-Group)

## Thanet Children and Young People's Play Strategy

<b>PP6 – ACCESSIBILITY AND INCLUSIVITY</b>					
<b>Objective</b>	<b>Outcome</b>	<b>Output</b>	<b>Timescale</b>	<b>How</b>	<b>Who</b>
	Identify common barriers to free play e.g. transport, accessibility, through consultation and audit	Barriers identified and means to address identified and overcome	March 2008	Annual participation and engagement programme established to inform annual priorities	TPP (Children and Young People Sub-Group)

<b>PP7 – TRAINING AND SUPPORT</b>					
<b>Objective</b>	<b>Outcome</b>	<b>Output</b>	<b>Timescale</b>	<b>How</b>	<b>Who</b>
To provide training and support to all those involved in the provision of opportunities for children and young	Carry out needs analysis for training / support required	Training provision and support needs meeting needs of all stakeholders	September 2008	Consultation event with Play Providers to establish needs (link to annual advice fair)	TPP (Resources Sub-Group)

## Thanet Children and Young People's Play Strategy

<b>PP7 – TRAINING AND SUPPORT</b>					
<b>Objective</b>	<b>Outcome</b>	<b>Output</b>	<b>Timescale</b>	<b>How</b>	<b>Who</b>
people with the aim of improving the quality of provision of play opportunities for children and young people across Thanet.	Improved links with training providers	Maximise available resources and opportunities	March 2008	Resources sub-group to identify training providers. Invitation extended to join TPP	TPP (Resources Sub-Group)
	Develop resource packs for funding and other support for community groups	Increase in external funding applications and increase in number of community groups involved in play provision	March 2008	Development of web-based information service with links to main funding bodies websites.  Raised awareness of support function of TDC / KCC	TPP (Resources Sub-Group)  TPP (Communications sub-group)

## Thanet Children and Young People's Play Strategy

<b>PP7 – TRAINING AND SUPPORT</b>					
<b>Objective</b>	<b>Outcome</b>	<b>Output</b>	<b>Timescale</b>	<b>How</b>	<b>Who</b>
	Annual funding / advice fair	Increased awareness of external funding opportunities and added value to projects	September 2008	Annual event to be organised used as means of celebration of achievements, consultation and feedback and offering advice and support	TPP (Resources / Communications Sub Groups)

## Thanet Children and Young People's Play Strategy

<b>PP8 – MONITORING AND EVALUATION</b>					
<b>Objective</b>	<b>Outcome</b>	<b>Output</b>	<b>Timescale</b>	<b>How</b>	<b>Who</b>
To ensure that all play opportunities are adequately and appropriately evaluated in order to constantly improve the quality of Play provision across Thanet.	Carry out site survey against MPFA standards	Improved play provision across Thanet	March 2008	Survey carried out and measure distance travelled	TDC
	Monitoring of levels of play provision against standards sets in PPG17 and Play Strategy	Benchmark against standards set. Improved play provision across Thanet	March 2008 an annually thereafter	Baseline data to be established during 2007  Annual audit	TDC  TPP / Engaging Youth Forum / KCC Y & C
	Regular monitoring and evaluation of progress against action plan	Improved play provision across Thanet	Quarterly	Reports considered by quarterly meeting of TPP	TPP (Monitoring and Review sub-group)
	Annual participation and engagement review event	Improved feedback on progress and target setting with children and young people	April 2008 and annually event thereafter	Initially strategy launch then identified annual event	TPP

## **Thanet Children and Young People's Play Strategy**

### **8.2 Criteria for identifying priorities for development**

8.2.1 Key criteria for projects to be supported by the Thanet Play Partnership were discussed and prioritised which will underpin decisions to be made on the projects to be allocated funding under the Children's Play Initiative or under any other external funding opportunity presented.

The top 6 (in priority order) were as follows:

- Improving opportunities for play and informal recreation;
- Involving children and young people in project development;
- Projects promoting health and physical activity;
- Projects engaging in partnerships with all sectors;
- Projects promoting enjoyment for children and young people and
- Projects promoting equal opportunities and social inclusion.

8.2.2 The Partnership also recognises the need, underpinning all of the above, for projects to be sustainable in the longer term.

8.2.3 Plans put forward for inclusion in the Big Lottery Bid take account of the findings of the PPG17 study undertaken in 2005/6, socio-economic data obtained, findings from the consultation undertaken, indicators of need as evidence from feedback from partner organisations.

8.2.4 There was overwhelming support from within the Thanet Play Partnership that a number of the projects should be developed by children and young people themselves, and that the funding should be fluid to allow this to happen.

8.2.5 Criteria for evaluation of projects put forward by children and young people will be drawn up but children and young people will be involved in choosing the projects themselves.

## **9 EVALUATION PLAN**

### **9.1 Evaluation**

In order to ensure that the Play Strategy and accompanying Action Plan is being effectively delivered and remains appropriate in changing and challenging times a structure of monitoring, evaluation and review must be established, together with an Accountable Body.

The Thanet Play Partnership is central to the delivery of the Play Strategy and will be responsible for ensuring that the aims and objectives of the Strategy and the targets included within the Action Plan are delivered. Thanet District

## Thanet Children and Young People's Play Strategy

Council will be the Accountable Body in terms of managing and accounting for any external funding obtained by the Thanet Play Partnership.

### 9.2 Evaluation Methodology

The Thanet Children and Young People's Play Strategy will be adopted by Thanet District Council and embedded within its Corporate Plan and annual delivery plans and will be reviewed in accordance with the Council's review mechanisms.

The Play Partnership will meet quarterly, in accordance with its Terms of Reference, to discuss key issues and monitor progress.

The Thanet Play Partnership will establish sub-groups (as detailed in the Action Plan) who will be responsible for delivering parts of the strategy. These sub-groups will determine their own meeting frequencies but will report to the Thanet Play Partnership on a quarterly basis outlining progress against targets.

An annual participation and engagement process with children and young people, their communities and play providers will seek to promote and celebrate the delivery of the strategy, key achievements and create opportunities for feedback, informing the Action Plan for the following year.

### 9.3 Outcomes

The outcomes as identified within the Action Plan will form part of the monitoring schedule as outlined above.

### 9.4 Performance Indicators

Indicative performance indicators are required to assess and measure the relative success of the strategy. They give a benchmark against which to measure and evaluate progress and monitor improvements to play opportunities as delivered by the Plan Strategy.

The following performance indicators are suggested:

PI	Detail	Data collection Method
PI 1	<b>Access to a variety of play facilities and spaces</b> % of children and young people having access to at least 3 types of play space or facility, at least 1 being a dedicated play space and	Open space and play strategy audits (review of PPG17)  GIS mapping

## Thanet Children and Young People's Play Strategy

	all within easy walking / cycling distance.	
PI 2	<p><b>Quality of activity-based Play facilities and spaces</b></p> <p>The proportion of play facilities and play spaces meeting the quality criteria for excellent / good ratings</p>	<p>Open space and play strategy audits (review of PPG17)</p> <p>Local evaluation – outreach sessions</p> <p>Standards measured against quality criteria used for PPG17 study</p>
PI 3a	<p><b>Satisfaction</b></p> <p>% children and young people who think the range and quality of play facilities and spaces they are able to access in their local neighbourhood is good or very good</p> <p>% of adults who think the range and quality of play facilities and spaces they are able to access in their local neighbourhood is good or very good</p>	<p>Engaging Youth Forum School surveys</p> <p>Citizens Panel</p>
PI 6	<p><b>Maintenance of fixed play sites</b></p> <p>% of play sites undergoing weekly maintenance and safety checks</p>	TLF / TDC record sheets

## Thanet Children and Young People's Play Strategy

### APPENDIX A

#### Membership of the Thanet Play Partnership

Name	Organisation	Remarks
Amber Christou	TDC Housing and Community Services	Replaced by Ashley Stacey
Amber Taroni	Fegans	
Andrew Local	Minster Parish Councillor	
Anne Davies	Jigsaw 4 U	
Ashley Stacey	TDC,	
Audrey Twyman	Clerk to Manston Parish Council	
Ben Rose	Youth Worker, Turn the Tide Youth Project	
Bill Butler	KC Youth and Community (Thanet and Dover)	
Brian White	Birchington Parish Councillor	
Bronwyn Wood	Lymington Road Park Project	
Chris Tull	TDC Commercial Services and TADSAD Representative	Also required to liaise with TDC Parks and Planning sections
Cllr Ingrid Spencer	TDC Portfolio Holder for Housing and Commercial Services, Champion for Play and Youth issues	
Cllr Liz Green	Ward Councillor and Shadow Leisure Portfolio Holder	
Cllr Roger Latchford	TDC Deputy Leader and Portfolio Holder for Commercial Services	
Frances Rehal	Sure Start	
Gilly Brown	Clerk to Monkton Parish Council	
Ivan O'Reilly	The Children's Society	
Janice Duggan	Thanet Community Housing Association	
Julie Francis	Clerk to St Nicholas at Wade and Sarre Parish Council	
Kath Kavanagh	From Small to Big	
Kyla Lamb	Clerk to Manston Parish Council	
Maureen Thoroughgood	Valley / Northdown Residents Association	
Mike Andrea	Pipeline	
Mike Pepper	Birchington Parish Councillor	
Nicole Wells	Lymington Road Park Project	

## Thanet Children and Young People's Play Strategy

Name	Organisation	Remarks
Nigel Cruttenden	Thanet Community Safety Partnership	
Peter Hooker	Thanet Leisureforce	
Phil Pittock	KCC, Extended Schools Development Manager, Thanet	
Ray Smicle	Dane Park Green Flag Project	
Residents Associations		11 in total – separate meeting to be arranged
Roy Dexter	Broadstairs and St Peter's Town Council	Margaret White deputising
Roy Wade	Cliffsend and Acol Parish Councils	
Sally Potter	Connexions	
Suzanne Dowse	TDC Corporate Projects Officer	
Vaughan Hawthorne-Nelson	Kent Children's Fund	

### NOTE:

11 Residents Associations consulted separately

## **Thanet Children and Young People's Play Strategy**

### **APPENDIX B – PPG17 Maps**

(Please note that these maps are not included with this version)

## Thanet Children and Young People's Play Strategy

### APPENDIX C – Audit of facilities and opportunities for children and young people on ward basis

Super Output Area (SOA)	Population 0 -17 years of age	No of Play Areas	Skate /BMX Facilities	Grassed pitches	Multi-Purpose Court	Youth Clubs	Holiday Play Schemes	Other
Beacon Road	1,263	1 St Peter's;						
Birchington North	499	1 Minnis Road						
Birchington South	1,105	2 Birchington Rec Ground; Crispe Park						
Bradstowe	747	1 Memorial Rec Ground;						
Central Harbour	1,822	2 Ellington Park; Warre Rec Ground	1 Warre Rec Ground					1 Adventure Trail
Cliffsend and Pegwell	885	1 Courtstairs; Cliffsend			1 Basketball post 1 Sports Wall			
Cliftonville East	1,046	1 Northdown Park						

## Thanet Children and Young People's Play Strategy

Super Output Area (SOA)	Population 0 -17 years of age	No of Play Areas	Skate /BMX Facilities	Grassed pitches	Multi-Purpose Court	Youth Clubs	Holiday Play Schemes	Other
Cliftonville West	1,622	0						
Dane Valley	2,553	3 Dane Park; Dane Valley Swinford Gardens; Laleham Road;			1 Ball games area			2 Adventure Trail
Eastcliff	1,746	2 Boundary Road; Camden Square						
Garlinge	1,349	2 Garlinge Rec Ground; Hartsdown Park,	1 Garlinge Rec Ground Teen Facilities					
Kingsgate	380	0						
Margate Central	1,187	0						
Nethercourt	954	1 Nethercourt Park						

## Thanet Children and Young People's Play Strategy

Super Output Area (SOA)	Population 0 -17 years of age	No of Play Areas	Skate /BMX Facilities	Grassed pitches	Multi-Purpose Court	Youth Clubs	Holiday Play Schemes	Other
Newington	1,640	1 Princess Margaret Avenue			1 Basketball post			
Northwood	1,705	2 Jackey Bakers Rec Ground; Coleman Crescent	BMX area		1 Basketball post			
St Peters	1,481	1 Vincent Close						
Salmestone	1,640	1 Tivoli Park						
Sir Moses Montefiore	1,388	1 King George VI Park;						
Thanet Villages	1,280	5 The Street, Monkton; Spratling Street, Manston; St Nicholas Parish	1 Minster Rec Ground		1 Basketball Post, Monkton  1 Basketball Post, St			

## Thanet Children and Young People's Play Strategy

Super Output Area (SOA)	Population 0 -17 years of age	No of Play Areas	Skate /BMX Facilities	Grassed pitches	Multi-Purpose Court	Youth Clubs	Holiday Play Schemes	Other
		Council; Minster Rec Ground; Crispe Road Acol;			Nicholas 1 Basketball Post, Acol Adventure Trail, Acol 5 a side goals, Acol			
<b>Viking</b>	1,532	1 Pierremont Park;						
<b>Westbrook</b>	1,006							
<b>Westgate-on-Sea</b>	1,446	1 Lymington Road	1 Lymington Road					

## Thanet Children and Young People's Play Strategy